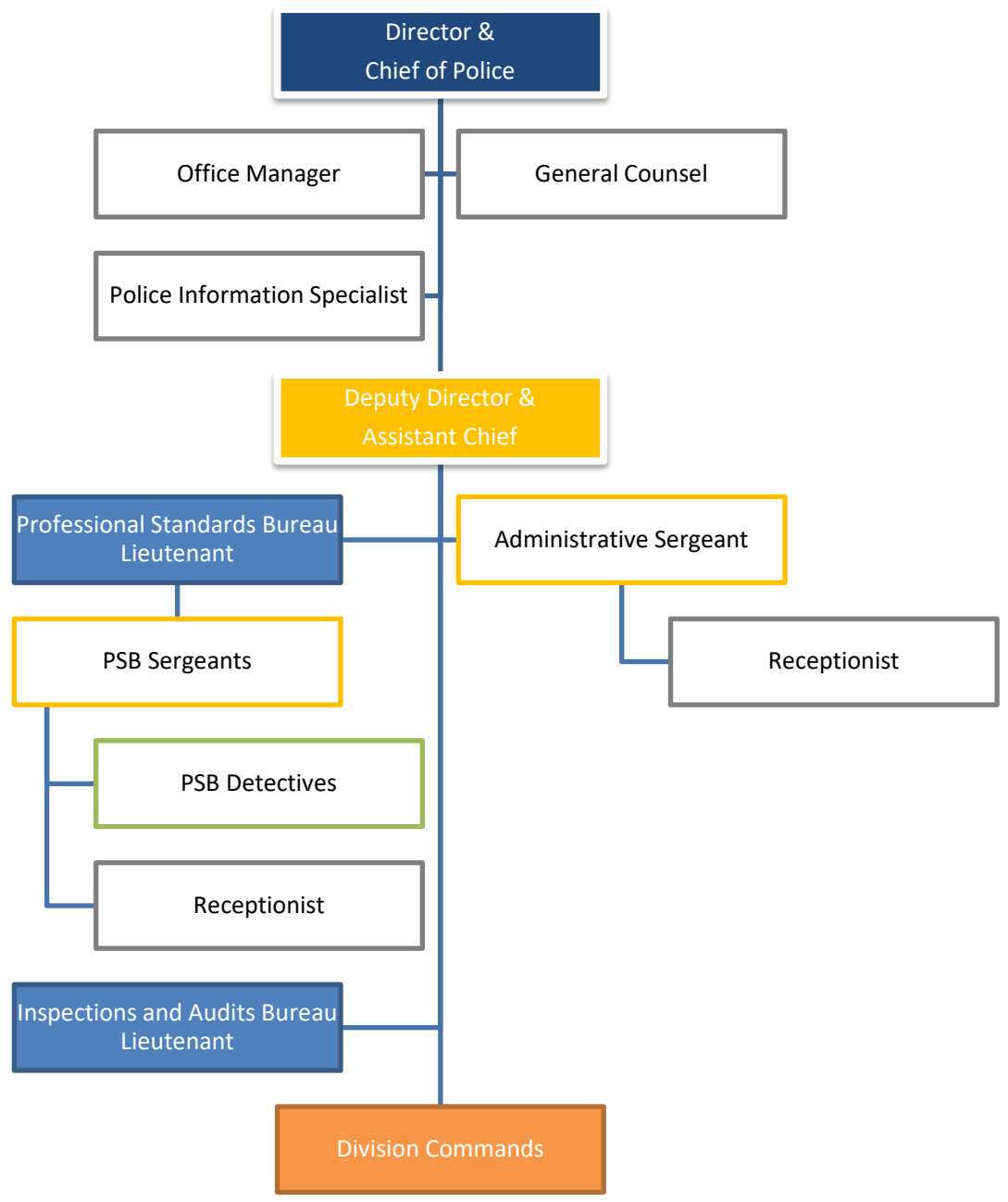
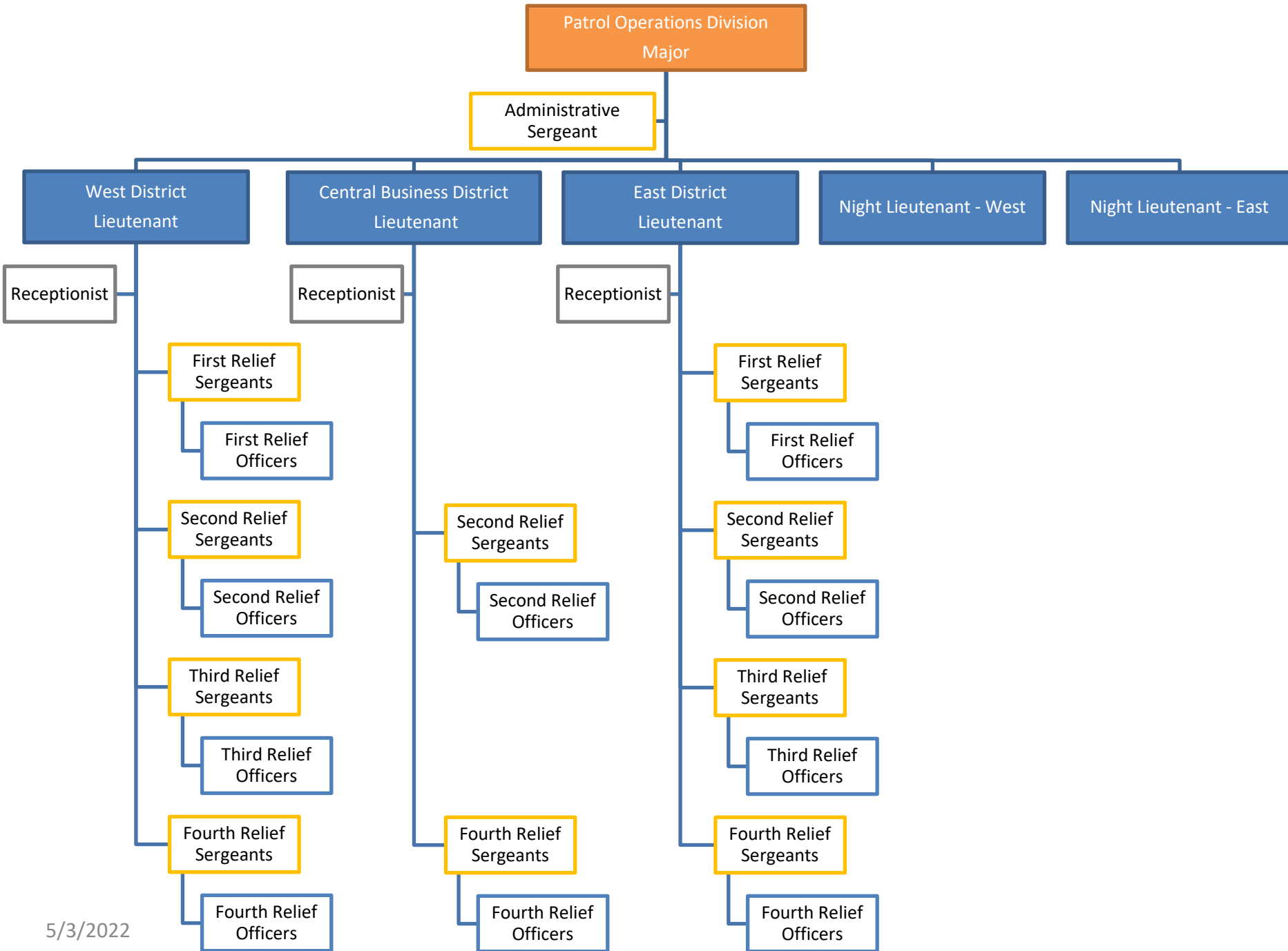


- Director and Chief
- Deputy Director and Assistant Chief
- Major
- Lieutenant
- Sergeant
- Detective
- Officer
- Professional Staff
- Secondary Assignment

1 – Chief
 1 – Assistant Chief
 5 – Majors
 14 – Lieutenants
 47 – Sergeants
 297 – Officers/Detectives
365 – Total Sworn

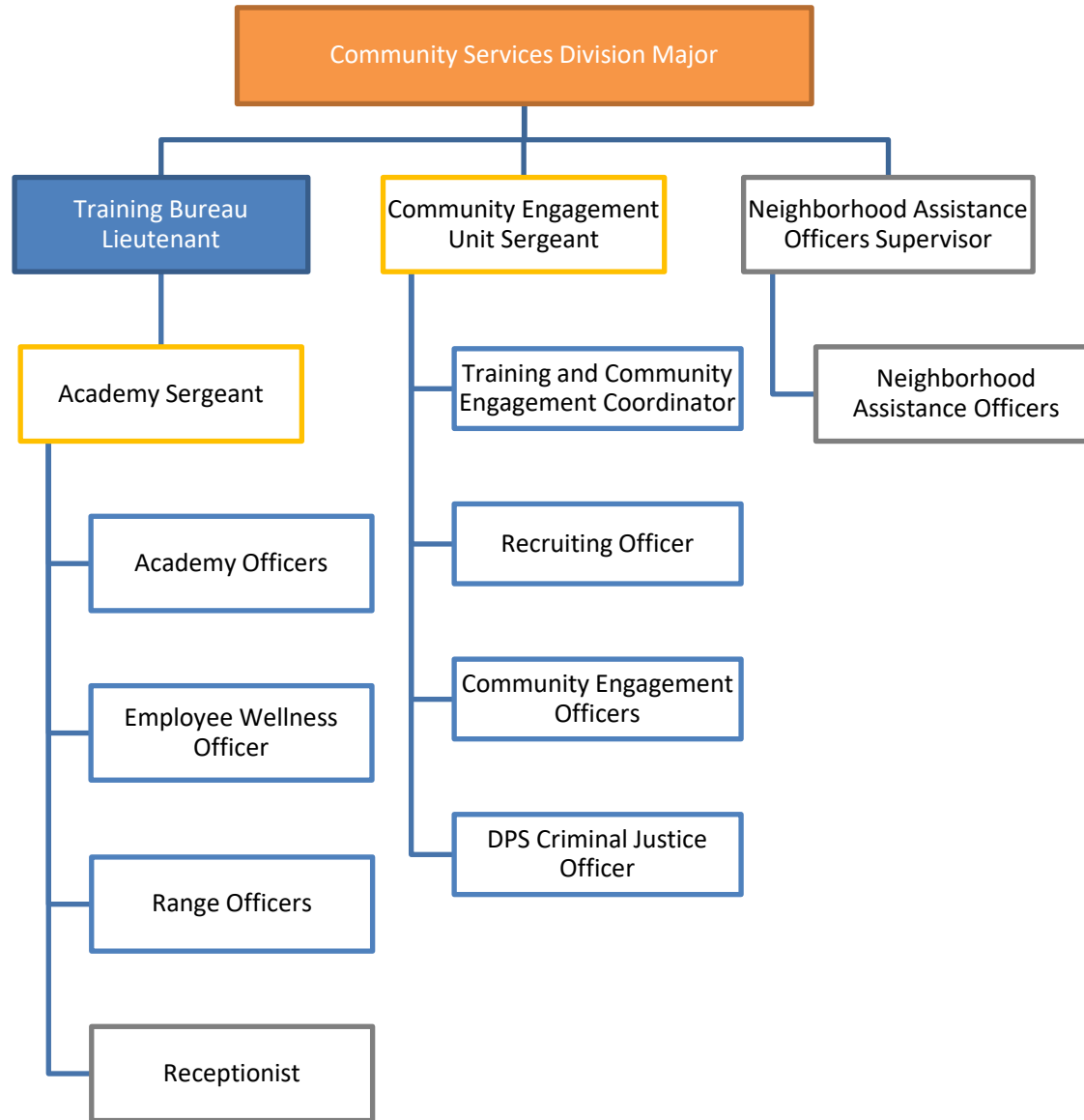


- Director and Chief
- Deputy Director and Assistant Chief
- Major
- Lieutenant
- Sergeant
- Detective
- Officer
- Professional Staff
- Secondary Assignment

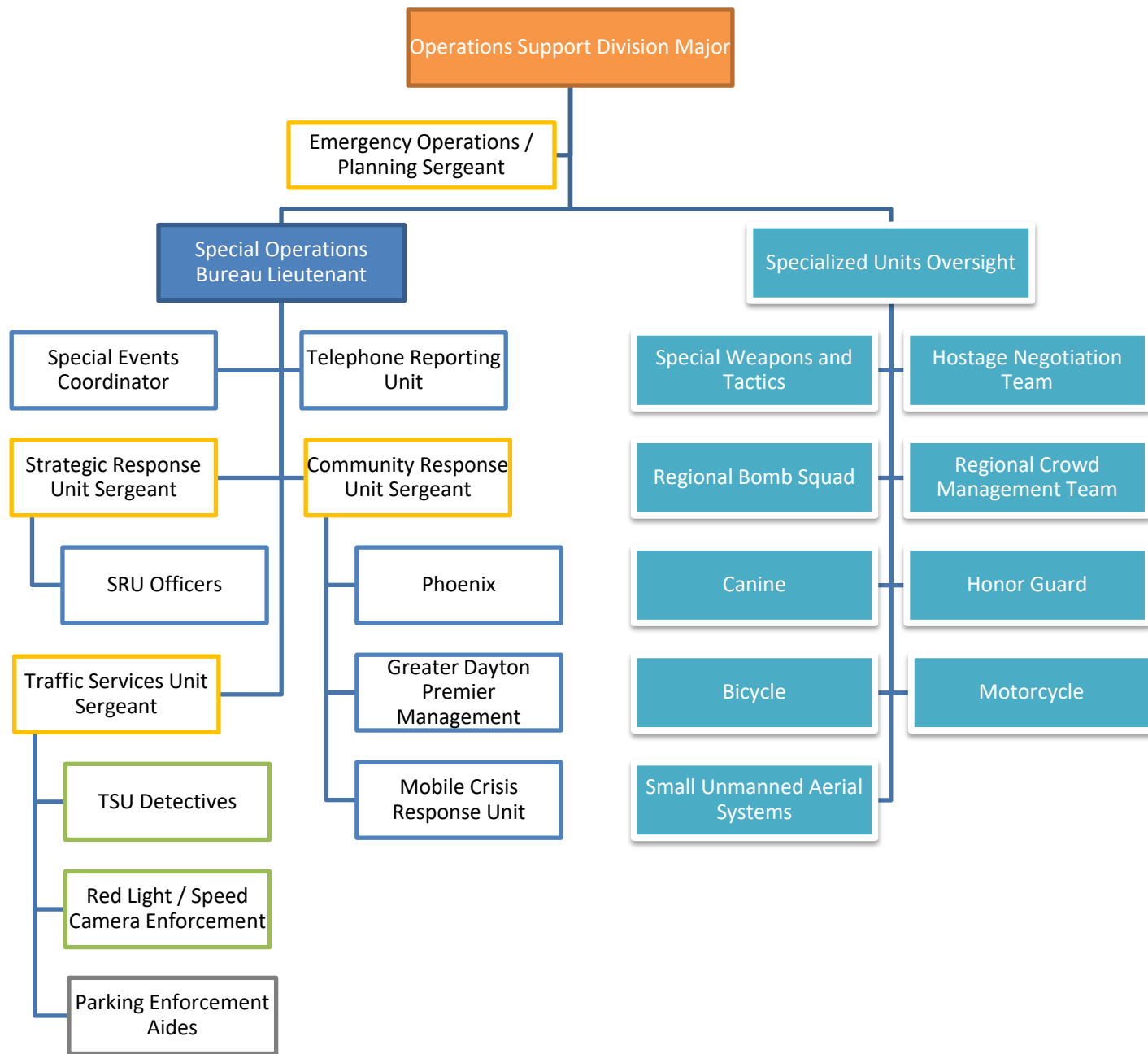


- Director and Chief
- Deputy Director and Assistant Chief
- Major
- Lieutenant
- Sergeant
- Detective
- Officer
- Professional Staff
- Secondary Assignment

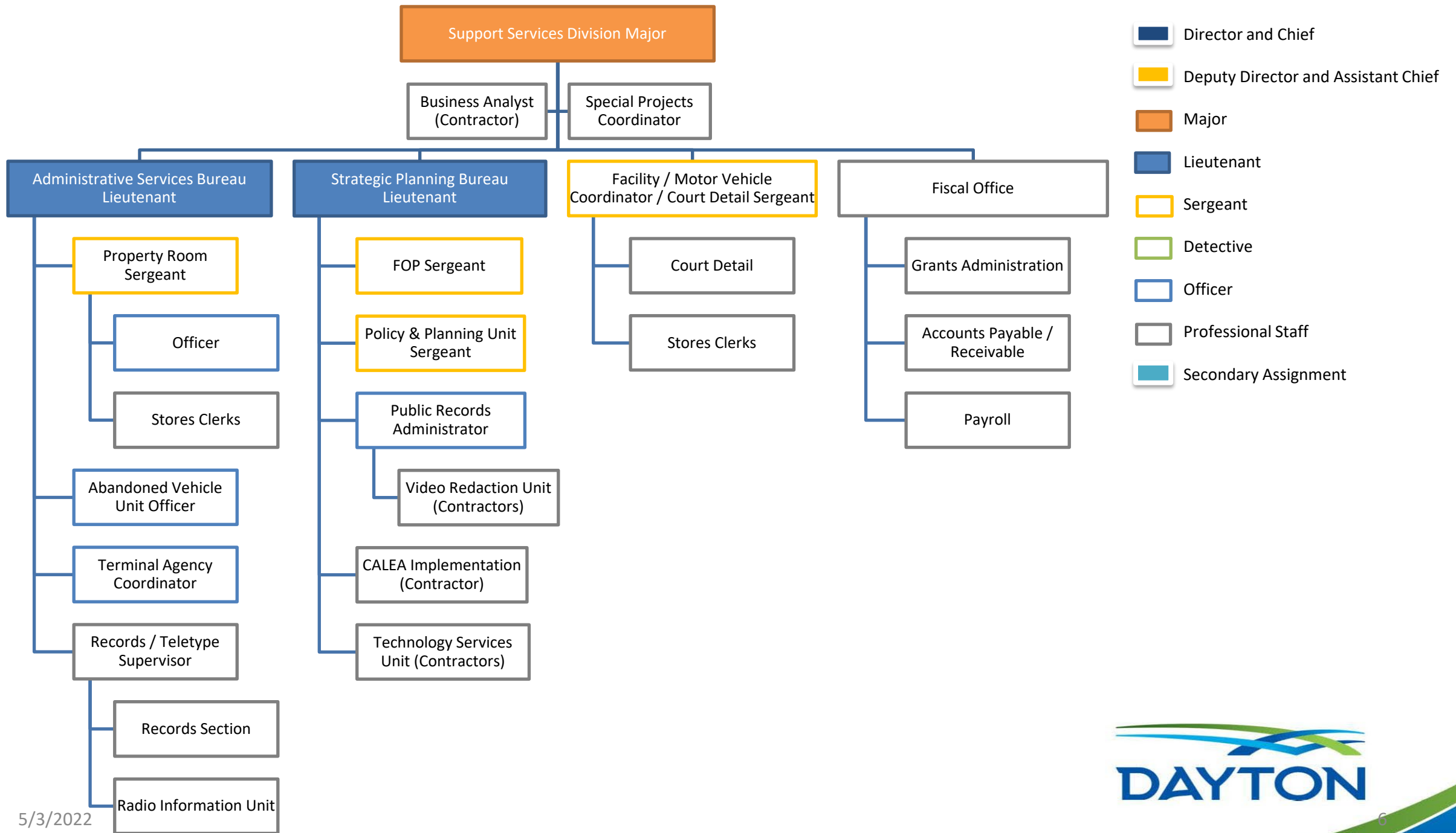
1 – Major
 5 – Lieutenants
 25 – Sergeants
 181 – Officers
212 – Total Sworn
(based on 365 Officers)

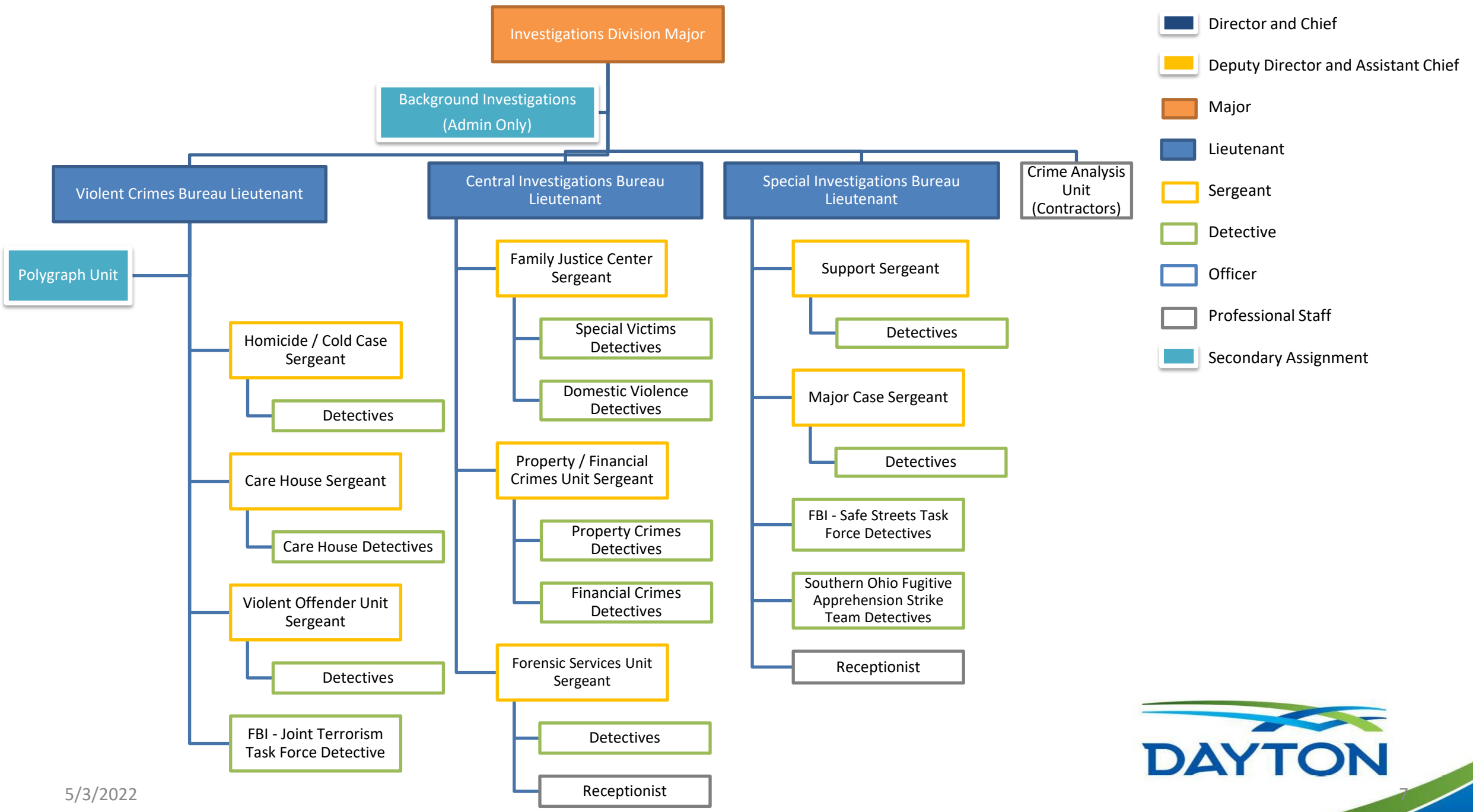


- Director and Chief
- Deputy Director and Assistant Chief
- Major
- Lieutenant
- Sergeant
- Detective
- Officer
- Professional Staff
- Secondary Assignment



- Director and Chief
- Deputy Director and Assistant Chief
- Major
- Lieutenant
- Sergeant
- Detective
- Officer
- Professional Staff
- Secondary Assignment





- Director and Chief
- Deputy Director and Assistant Chief
- Major
- Lieutenant
- Sergeant
- Detective
- Officer
- Professional Staff
- Secondary Assignment