



**YOUR
VOICE
MATTERS**



Dayton's First Active Transportation Plan

Ensuring our Sidewalks, Streets, and Pathways Serve Our Entire Community

Above and Beyond: Elevating our Neighborhoods | October 1, 2022

Welcome!



The purpose of this presentation is to share an update on our Active Transportation Plan and report out on our initial listening phase.

Today's agenda:

- Plan Overview
- Community Engagement Results
- Process and Next steps
- Q&A

PLAN OVERVIEW



What is Active Transportation?



Active transportation is **human-powered transportation** that engages people in healthy physical activity while they travel from place to place.

People walking, bicycling, using strollers, wheelchairs/ mobility devices, skateboarding, and rollerblading are engaged in active transportation.

People Walking...

running, in a wheelchair, pushing stroller, etc.



Types of Pedestrians

- Wide range of temporary and long-term physical abilities
- Various cognitive abilities
- Different degrees of “traffic tolerance”
- Some may be carrying or pushing cargo/kids



There is no required education program or licensing for pedestrians

People Riding...

bike, scooter, skate, etc.

- Beyond bikes
- Includes micromobility devices
 - Lightweight vehicles that travel below 15 mph
 - e-bikes, electric scooters, pedal assisted bikes, etc.



No such think as “typical” cyclists

Why is the City undertaking an AT plan?



- Best practice for cities and supported by our state and regional partners (ODOT and MVRPC)
- Ensures Dayton's plans for our walking and biking networks are consistent with the goals of our funding partners
- Helps us create a community-informed prioritization for our project list

Other Planning Efforts

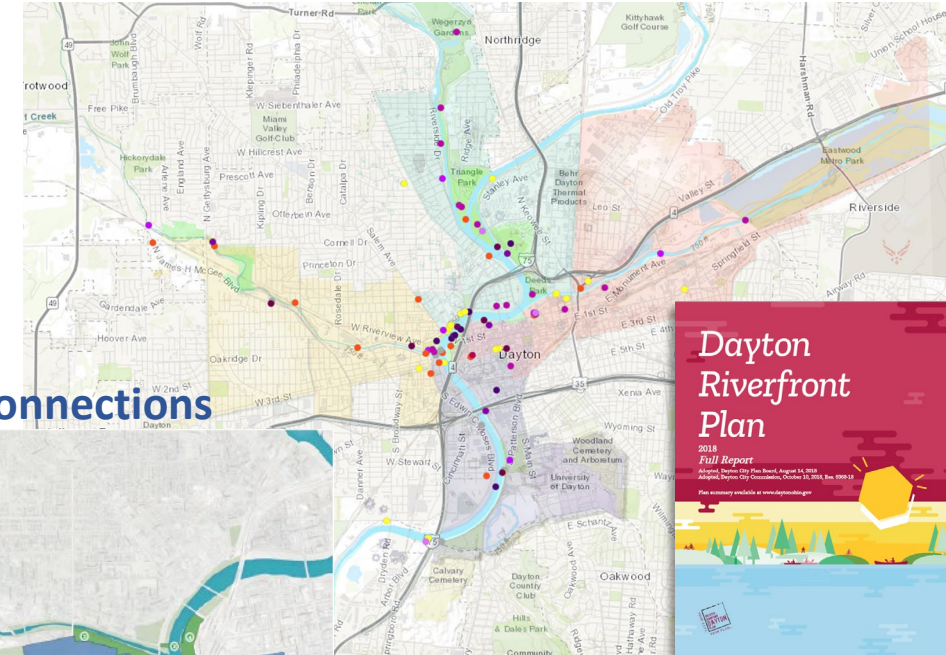
- **Livable Streets Policy – 2010**
- **City of Dayton 2025 Bicycle Action Plan - 2011**
- **Dayton Transportation Plan 2040- 2017**
- **Dayton Public Schools Safe Route to School Travel Plan- 2018**
- **Downtown Streetscape Guidelines & Corridor Plan- 2020**
- **MVRPC's Active Transportation Plan – to be adopted 2022**



Community Led Implementation Priorities

- **Dayton Riverfront Masterplan**– 2018 adopted plan with 47 cycling and trail projects identified within four river corridors
- **Neighborhood Vision Plans** – community-wide planning effort completed over five years and finalized in 2021 with prioritized recommendations for each quadrant of the city

Riverfront Masterplan– Cycling projects



West Dayton NVP – Green Connections



Dayton Riverfront Plan



Draft Vision



People of all ages and abilities –
living, working, and visiting
the City of Dayton –

have access to **affordable, safe, convenient** methods of
transportation including **cycling, walking,** and other types of
micromobility for

recreation, utility, and commuting.

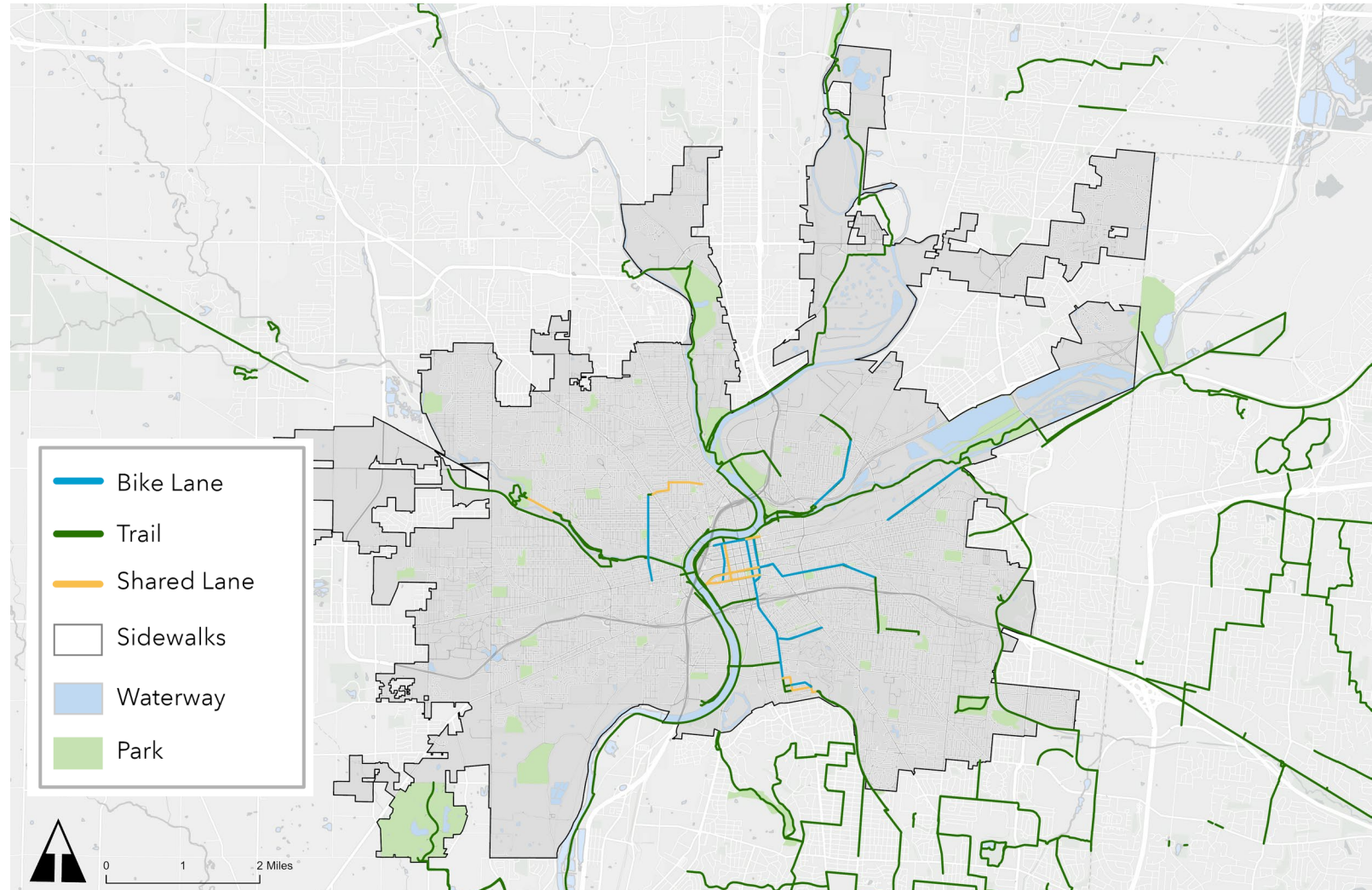


PLAN OVERVIEW
Existing Conditions

Existing Bicycle and Pedestrian Systems

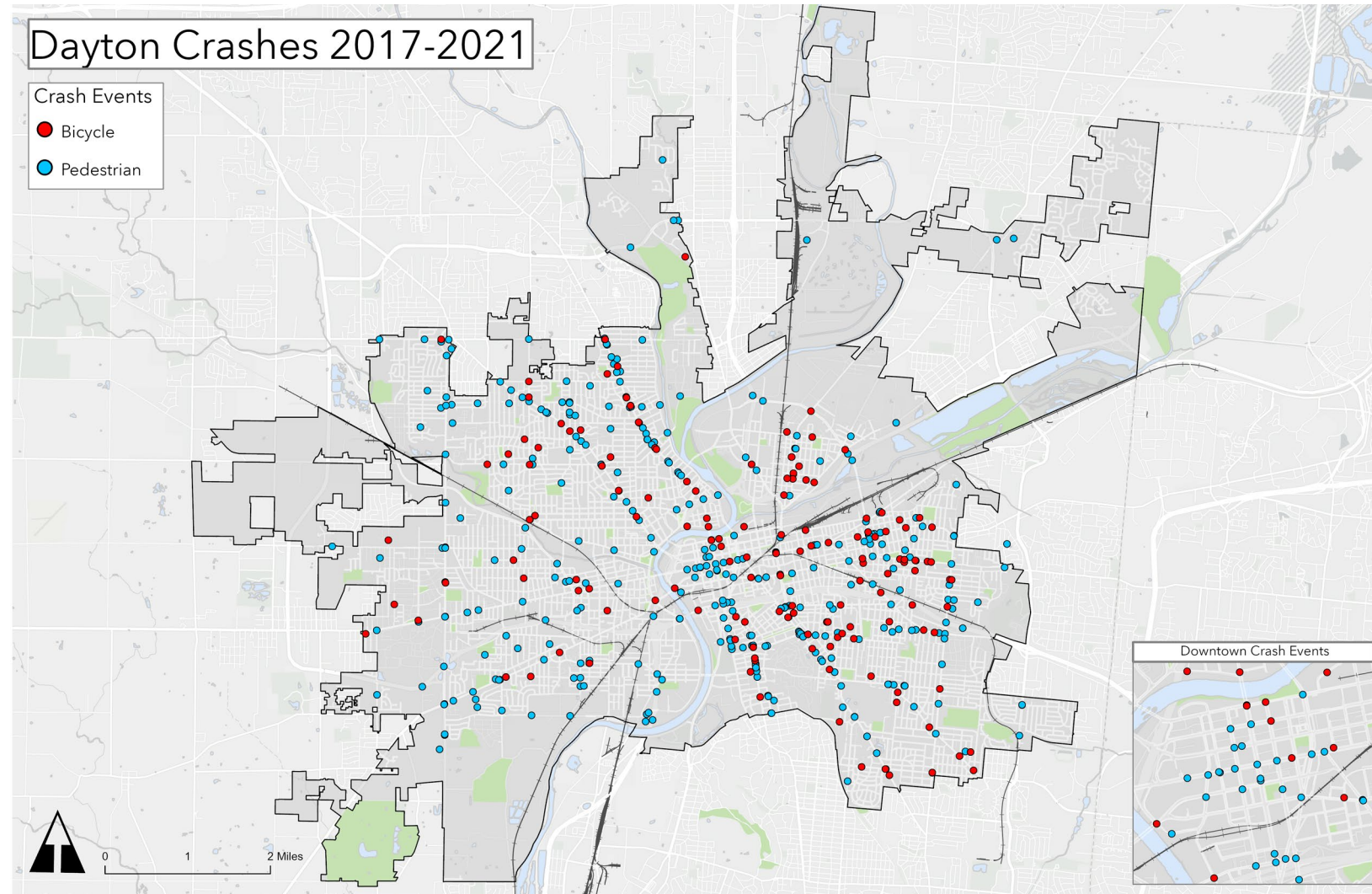
Existing Facilities

- **Fragmented Systems** – It is especially difficult to navigate on bike outside of the city's core
- **Poor Coverage in West Dayton** –lacking bicycling infrastructure
- **Gaps in regional Trail Network** – Dayton's trails need to connect into our neighbors' systems



Safety Analysis Observations

- **Most Crashes Are on Arterials** – secured state safety funding for issues on Salem Ave and North Main St
- **Most Streets Performing Poorly** – Especially downtown and along commercial corridors



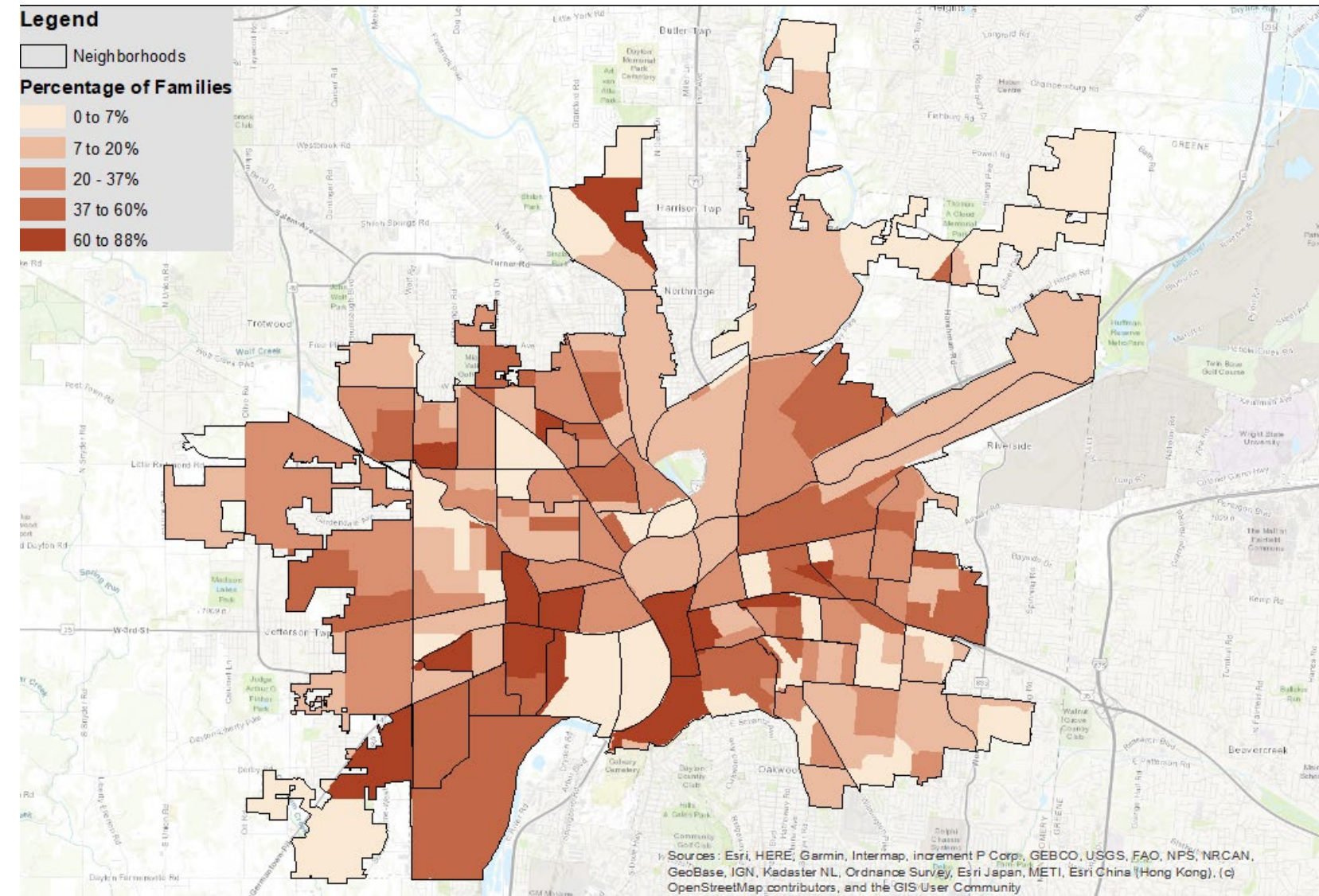
Demographics

Populations that need easy and safe access to active transportation networks are spread across the city

Many of these households do not have access to automobiles

These populations are more vulnerable to crashes with motorized traffic

Families at or Below the Poverty Level



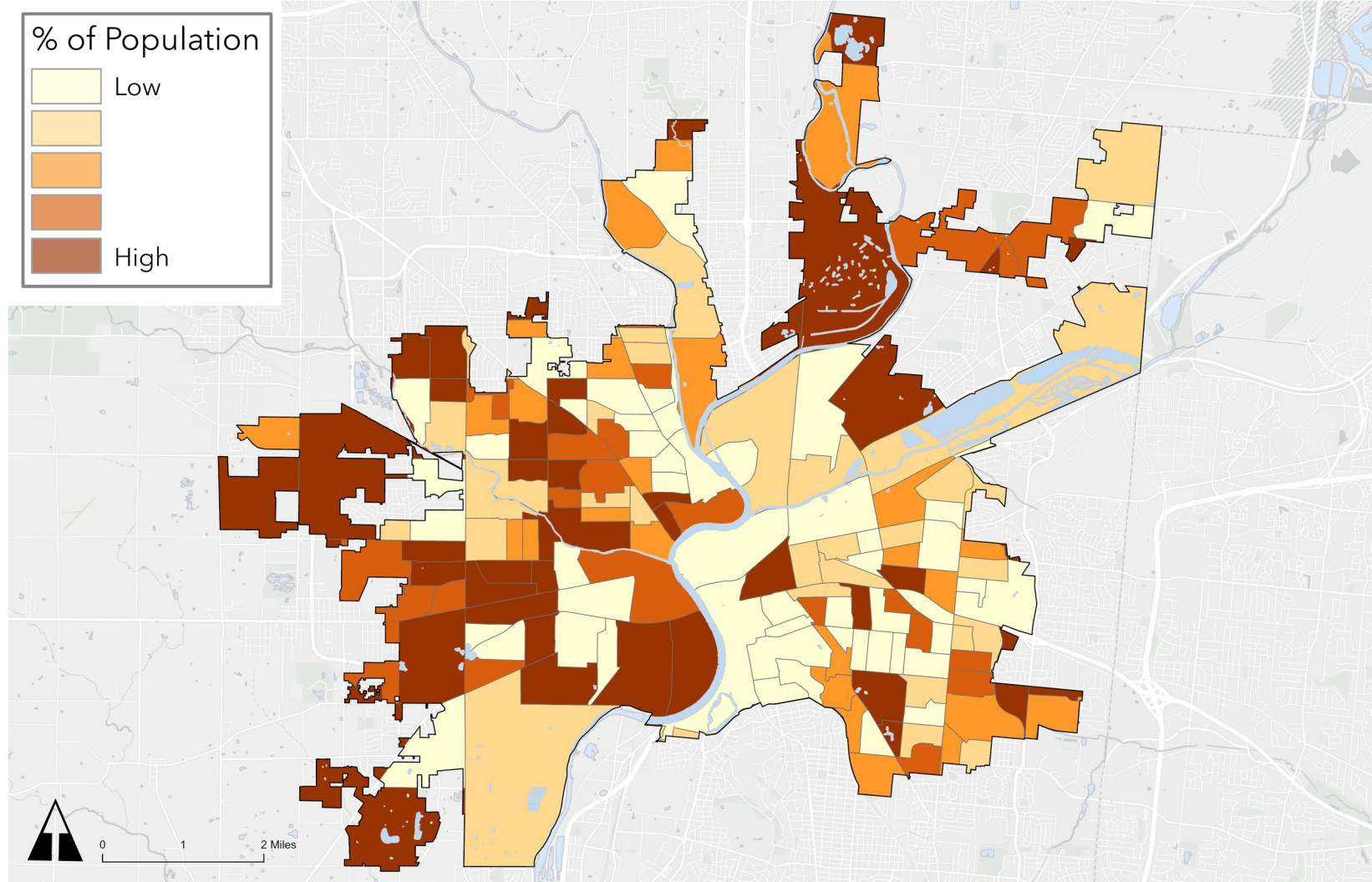
Demographics

Populations that need easy and safe access to active transportation networks are spread across the city

Many of these households do not have access to automobiles

These populations are more vulnerable to crashes with motorized traffic

Percentage of Population Over Age 65



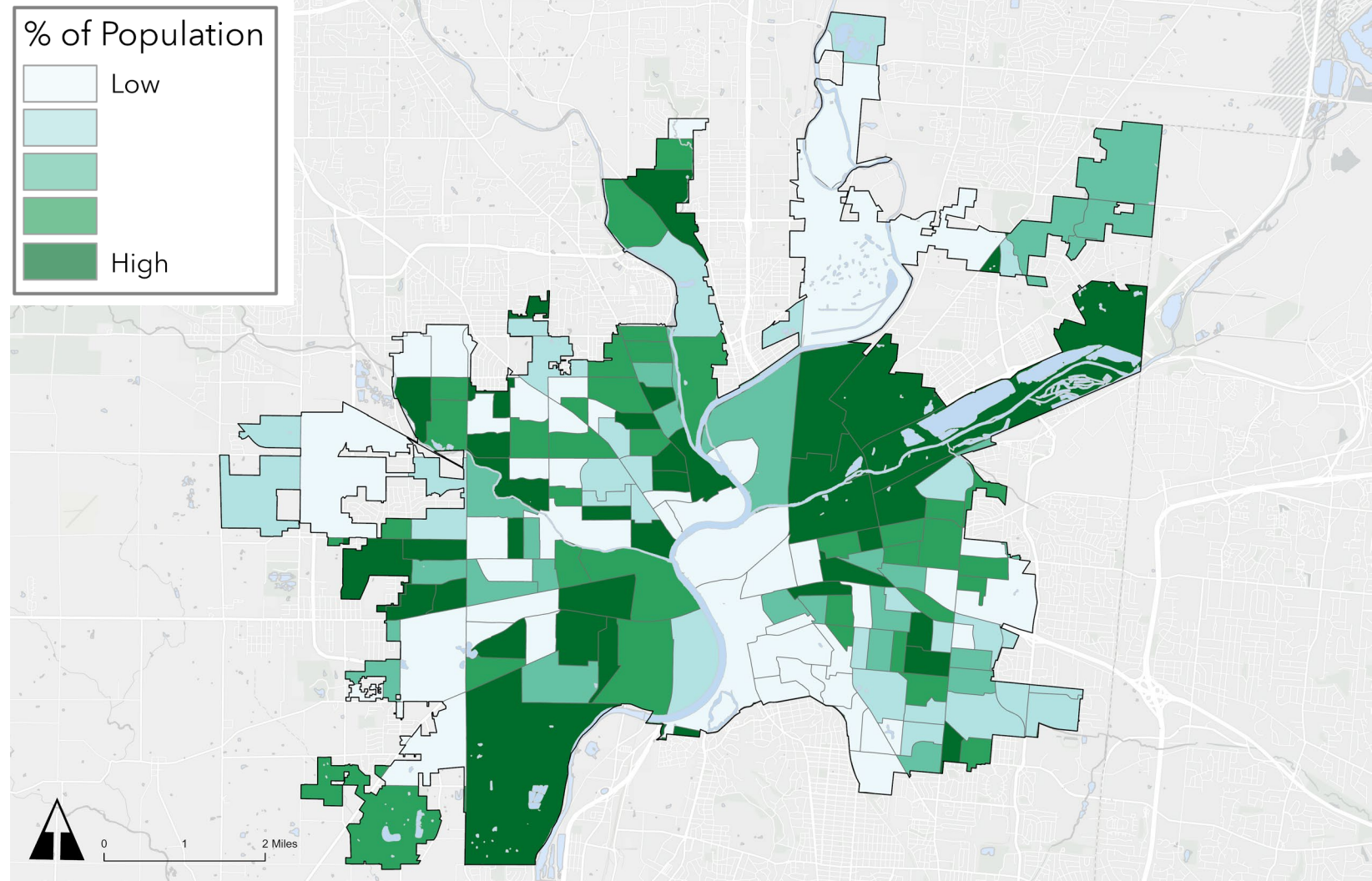
Demographics

Populations that need easy and safe access to active transportation networks are spread across the city

Many of these households do not have access to automobiles

These populations are more vulnerable to crashes with motorized traffic

Percentage of Population Under Age 18

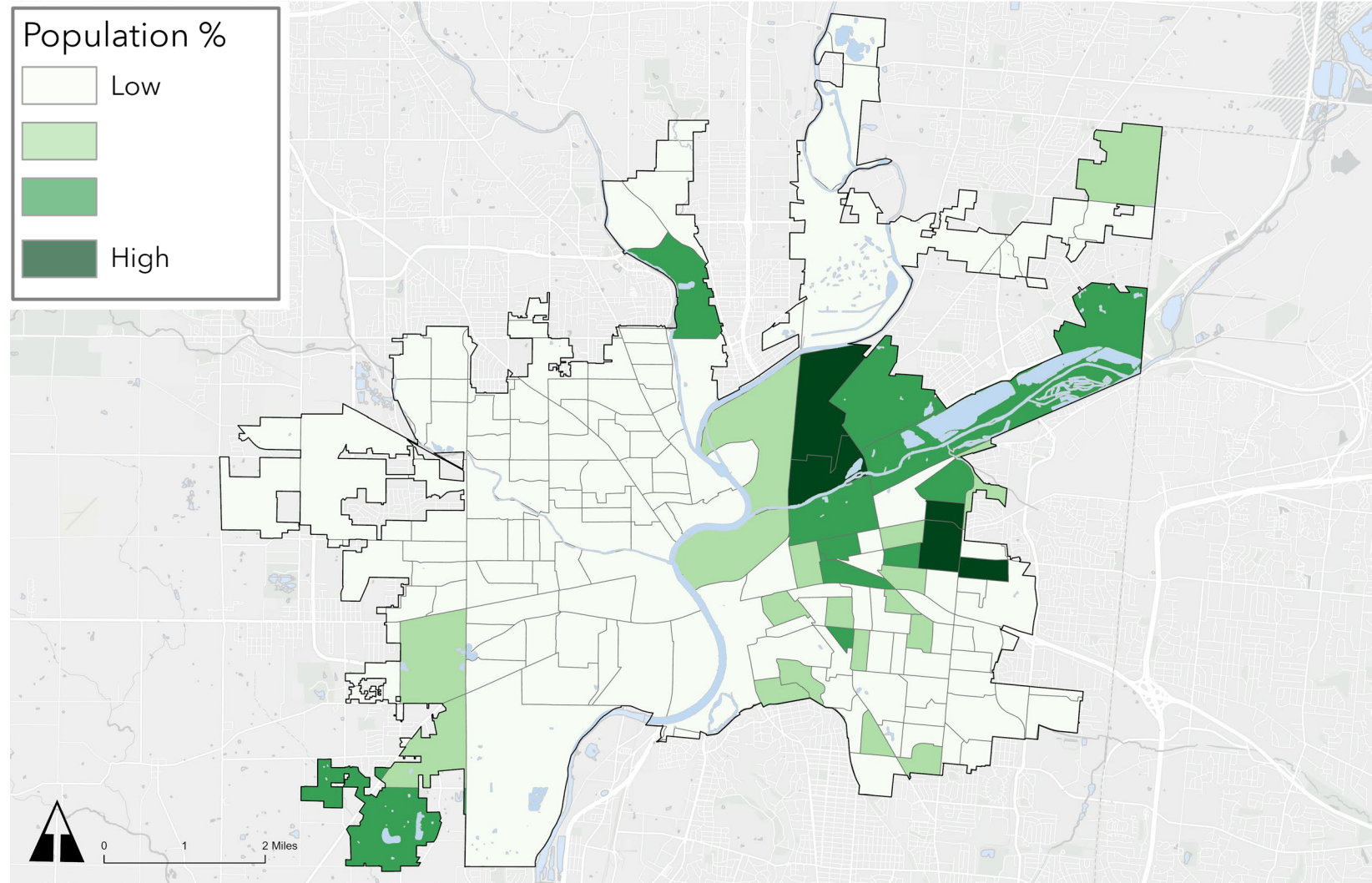


Demographics

**English as a Second Language
Population Primarily on
Northeast Side**

This needs to be accounted for
in public engagement efforts

Limited English Proficiency

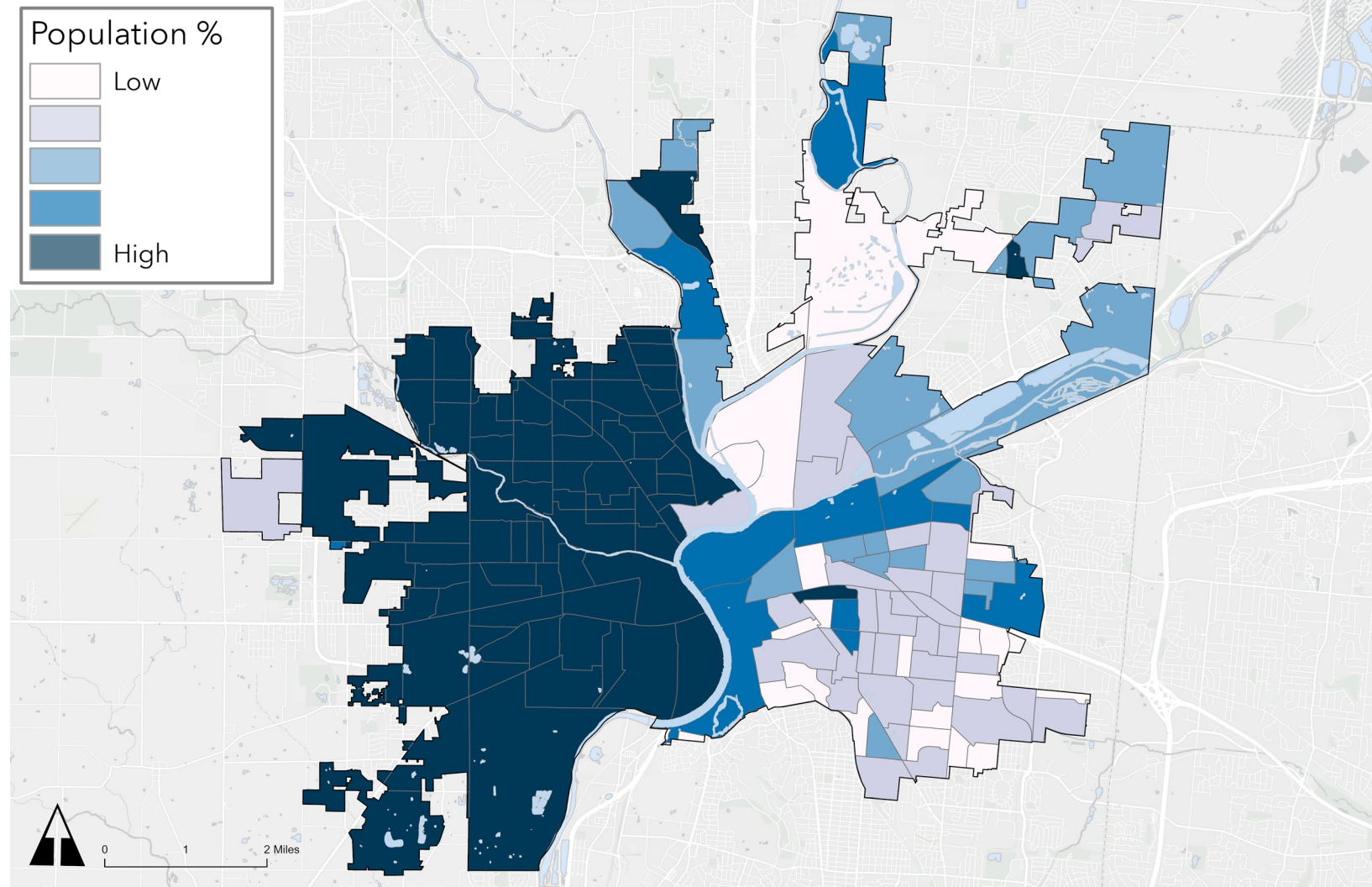


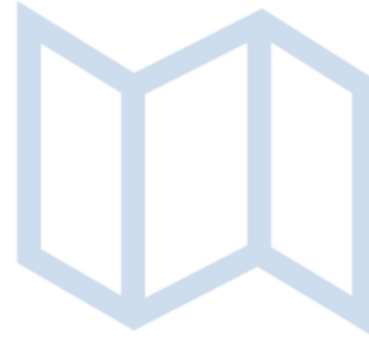
Demographics

The African American
Population is Concentrated on
the West Side

Community engagement and
wayfinding destinations should
reflect the community

Population of a Race other than White





COMMUNITY ENGAGEMENT RESULTS

MAY – JULY 2022

In-Person Public Engagement



- **Mini-Meetings** – attended 13 organizations' existing meetings to discuss the project
- **Pop-up Events** – staffed tables at 20 larger events to increase awareness of the project and input opportunities



19

Meetings with
Local groups





20

Public input
Events

Focus Groups

When it comes to active transportation, what issues do you see that this plan should address?

- Safety concerns
- Issues related to specific populations
- Physical and mental wellbeing

What issues do you see that this plan should address?

More bike lanes +2	More shade and water fountains +2	Focus on access to the workplace (infrastructure, access to bikes, and coordination with transit) +2	Need bikes with baskets	Sidewalk	Wayfinding
Provide bike parking at business and stores +2	Quality of sidewalk - truly accessible for all users	Safe sidewalks for recreational adult walker (minimize fall risk, places to rest)	Educational and buy from drivers		
More public restrooms	Emergency support systems - kiosks/call boxes				

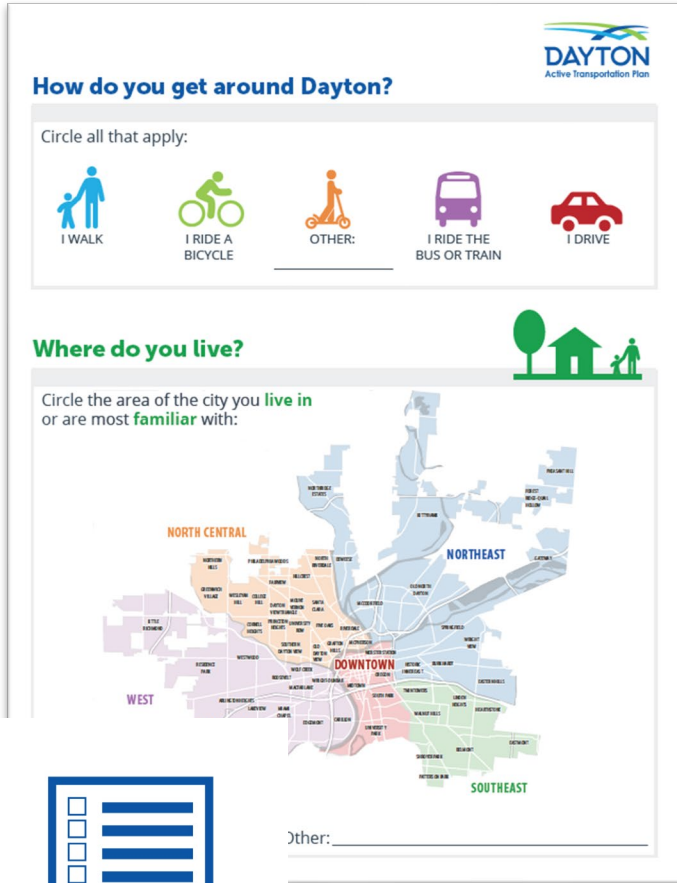
Underserved populations

What is your top priority for this plan?

Accessibility and Safety to work and daily errands (shade, water access, low barrier) +3	Safety (cracks in sidewalk, visible emergency mechanism, orientation/location markers) +3
Inclusion and promote solidarity around health safety and longevity of aging population that benefit everyone (+2)	Inclusion of all neighborhoods (not just downtown) +2

- **Focus Groups** – convened 7 issue or user centered groups via google meet
 - **Bike Clubs and Micromobility**
 - **Economic Development and Local Businesses**
 - **Community Health**
 - **Higher Education**
 - **Underserved Populations**
 - **Residents**

Paper and Online Surveys



How do you get around Dayton?

Circle all that apply:

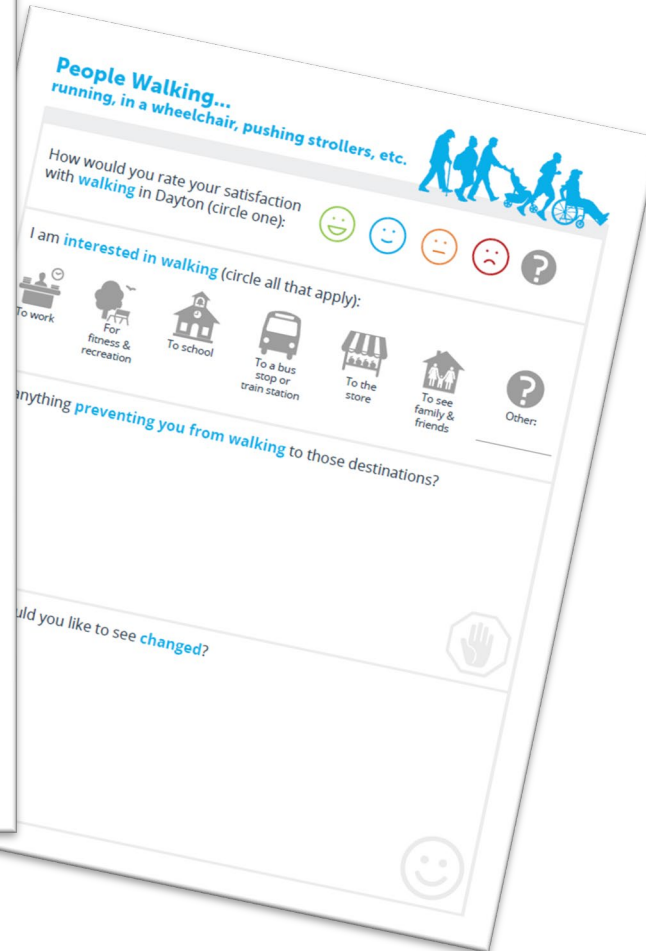
I WALK I RIDE A BICYCLE OTHER: I RIDE THE BUS OR TRAIN I DRIVE

Where do you live?

Circle the area of the city you live in or are most familiar with:

NORTH CENTRAL, WEST, DOWNTOWN, SOUTHEAST, NORTHEAST

Other: _____



**People Walking...
running, in a wheelchair, pushing strollers, etc.**

How would you rate your satisfaction with walking in Dayton (circle one):

I am interested in walking (circle all that apply):

To work For fitness & recreation To school To a bus stop or train station To the store To see family & friends Other:

Anything preventing you from walking to those destinations?

Did you like to see changed?

- **Survey** – Offered a brief survey to identify the specific issues the plan should address
- Over **1,000** people completed our survey (Thank you!!)
- Translated into 5 languages



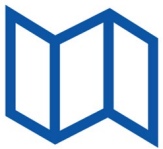
1000+
Surveys
Completed

Online Public Engagement



The City of Dayton is seeking input and guidance on Dayton's first Active Transportation Plan! Use the links below to provide online input, or join us in-person at local events to discuss existing and future active transportation needs in Dayton.

- **Project Website** – Project information and results are posted
- **Input Map** – Final map of over 340 comments made by our community on specific places



340+
Online map
Comments



WEB SURVEY



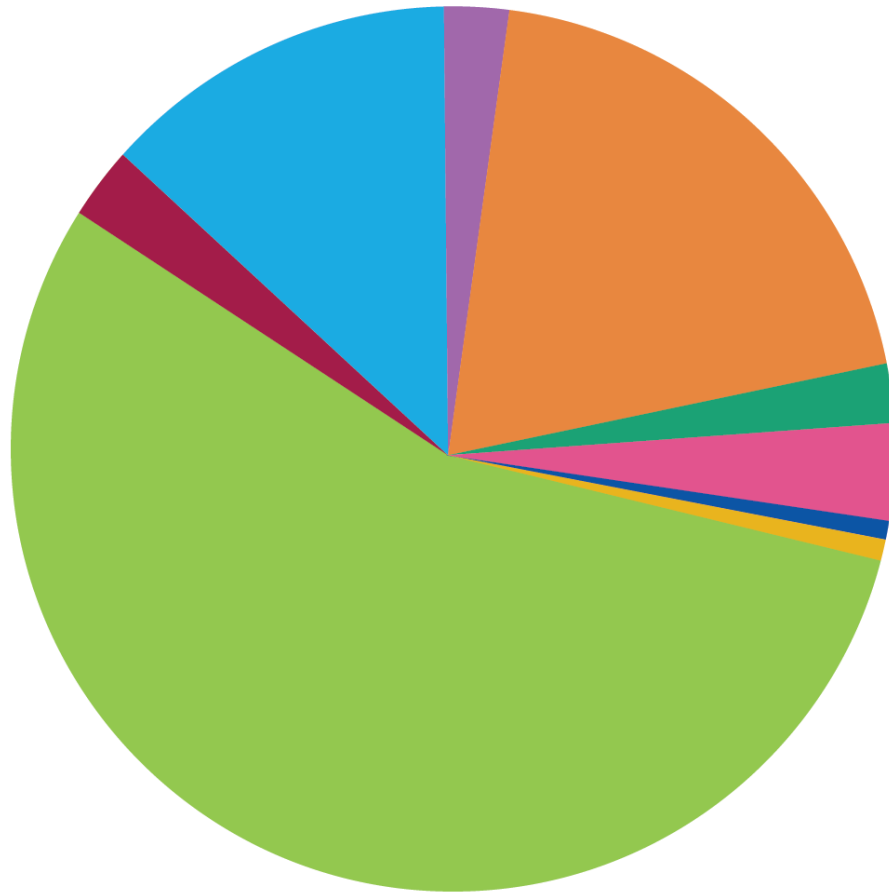
WEB INPUT MAP










COMMUNITY ENGAGEMENT RESULTS

Who participated in the survey



Demographics



-  **WHITE 56%**
-  **AFRICAN AMERICAN OR BLACK 20%**
-  **HISPANIC OR LATINO/A OR SPANISH ORIGIN 3.6%**
-  **AMERICAN INDIAN OR ALASKA NATIVE 2.2%**
-  **ASIAN 1.8%**
-  **MIDDLE EASTERN OR NORTH AFRICAN 0.7%**
-  **NATIVE HAWAIIAN OR OTHER PACIFIC ISLANDER 0.6%**
-  **OTHER 2.6%**
-  **SKIPPED QUESTION 13.1%**

Demographics

55%

**IDENTIFY AS
A WOMAN**

43%

**IDENTIFY AS
A MAN**

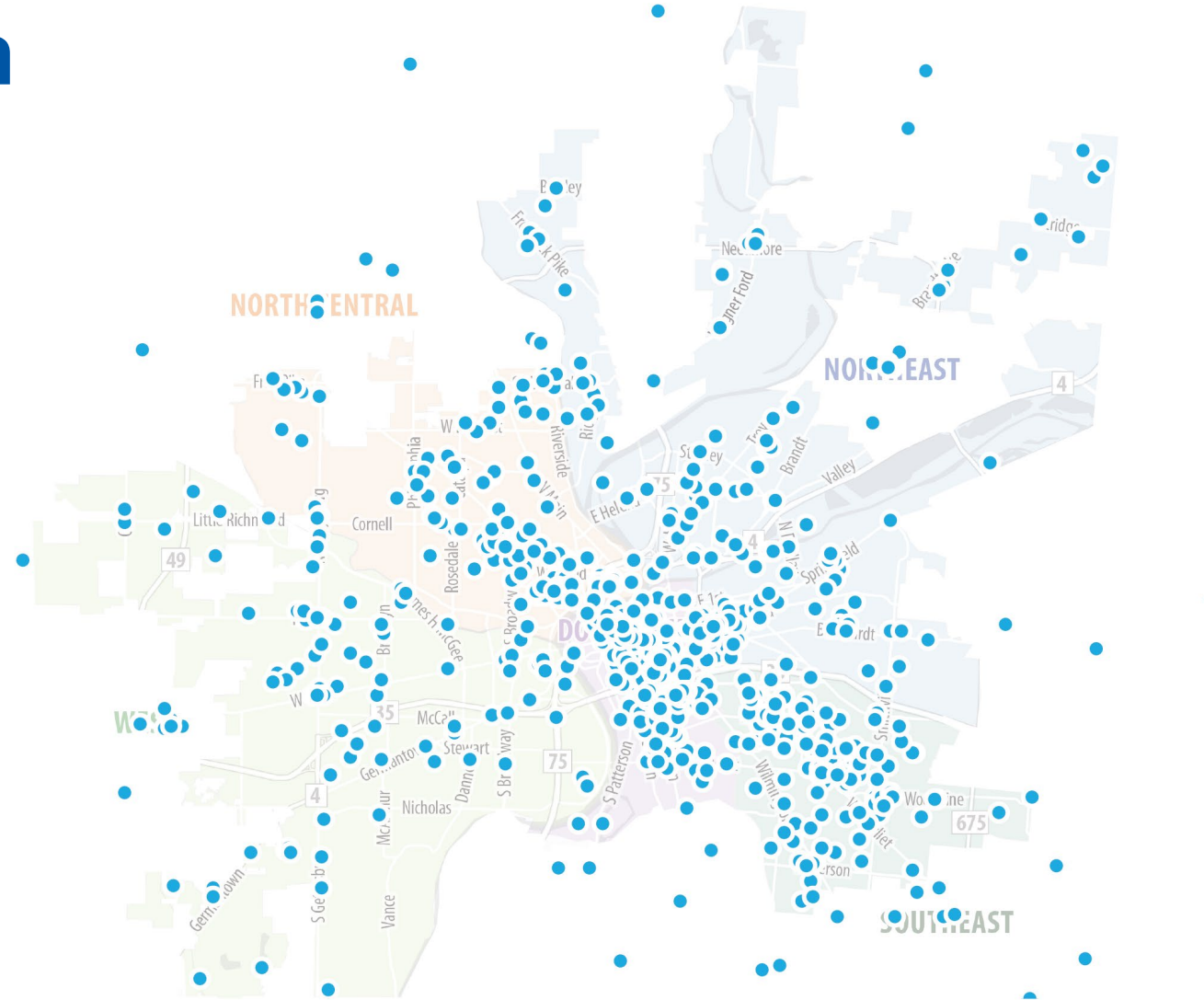
1%

**IDENTIFY AS
GENDER NONBINARY**

1%

**IDENTIFY AS
TRANSGENDER**

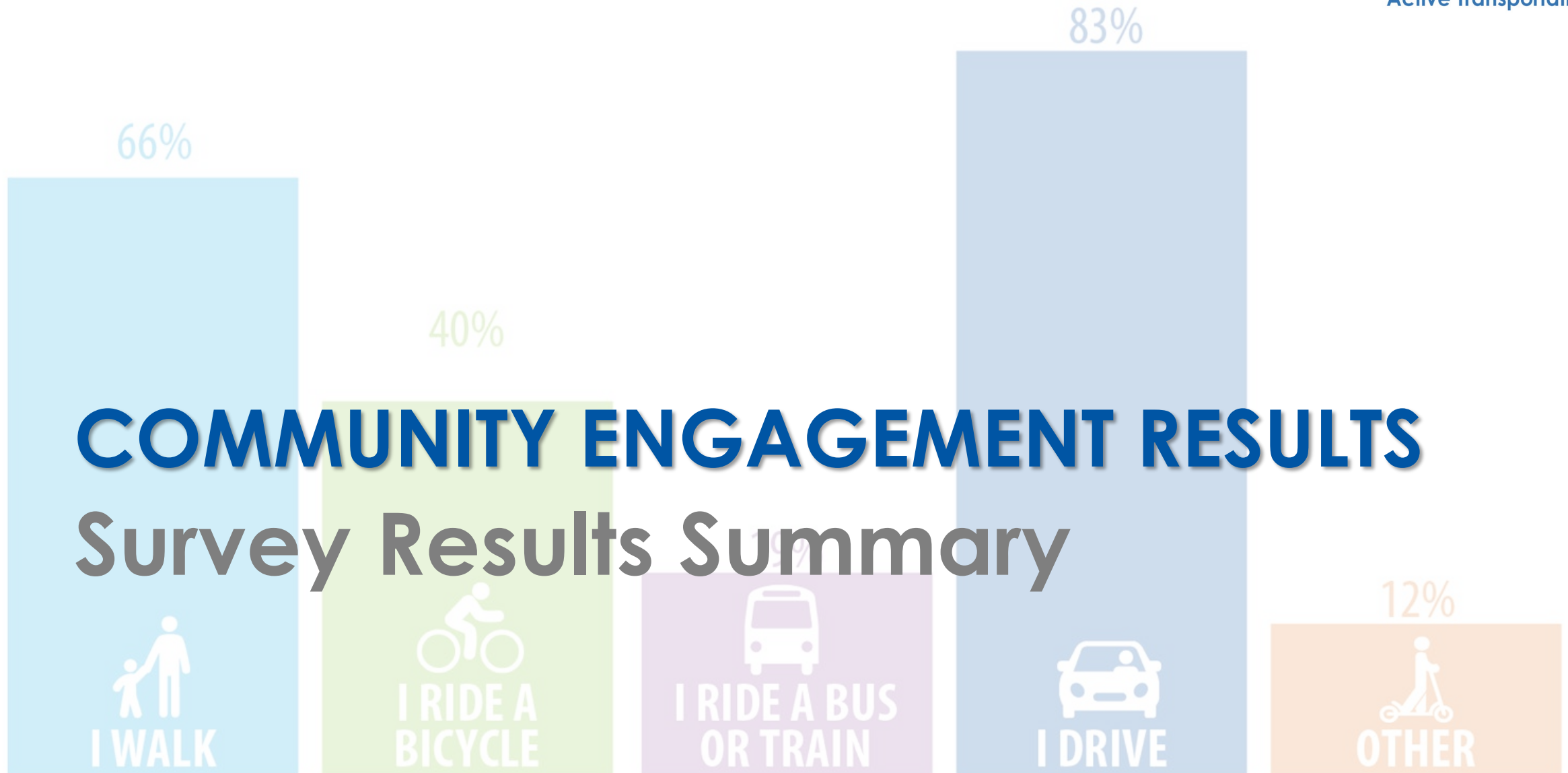
Distribution



TOP ZIP CODES: 45410, 45402, 45417, 45405, 45406, 45403, 45420, 45404, 45419, 45424, 45414

Characteristics

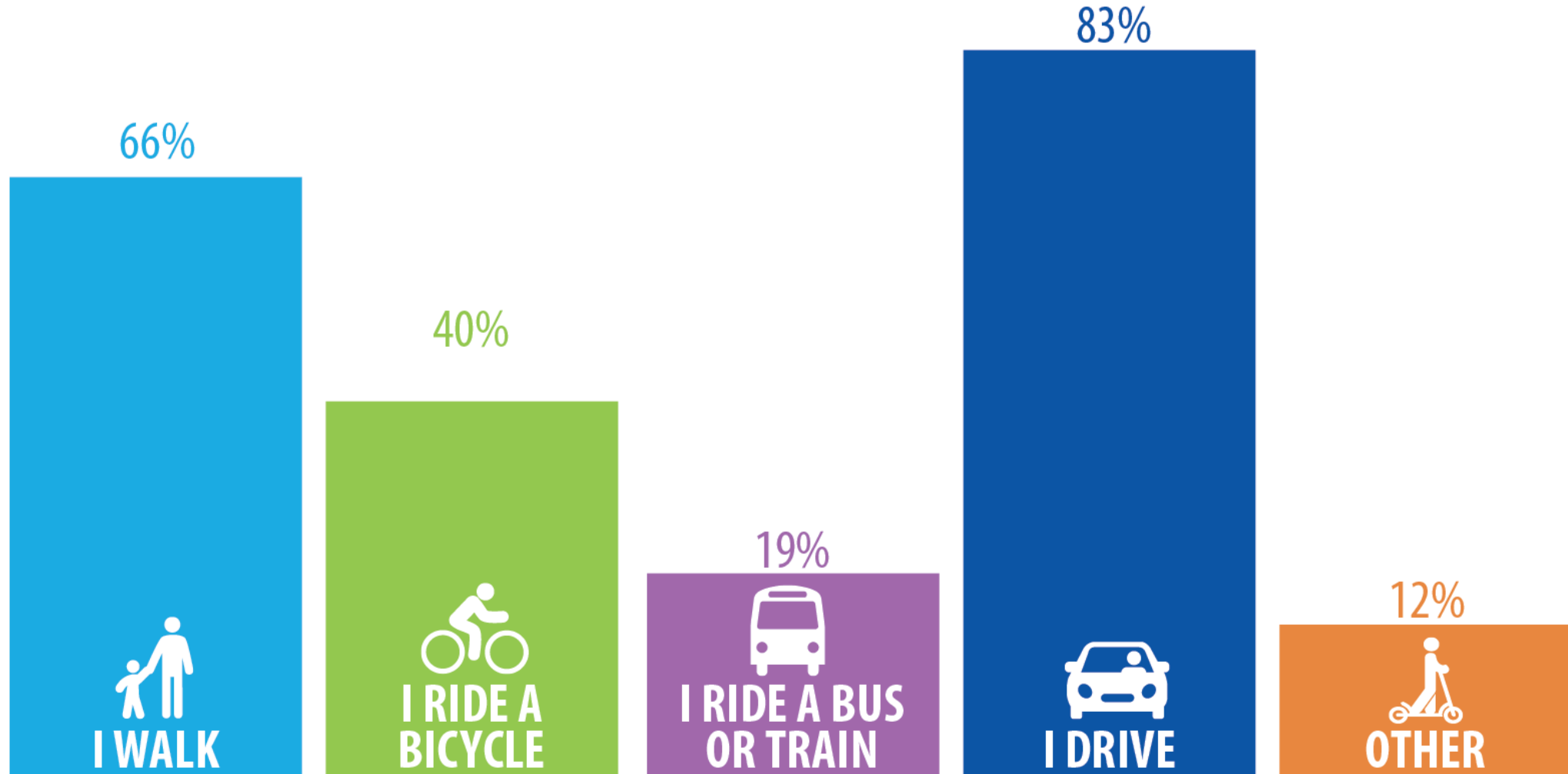




COMMUNITY ENGAGEMENT RESULTS

Survey Results Summary

How do you get around Dayton?



IS ANYTHING PREVENTING YOU FROM WALKING TO THOSE DESTINATIONS RIGHT NOW?



- 1 Personal Safety (stray pets, crime, panhandling)
- 2 Sidewalk Conditions (disrepair, narrow, trash, wheelchair accessible)
- 3 Time/Distance to Destinations (grocery stores, recreation centers)
- 4 Lack of Snow and Ice Removal (sidewalks, ramps)
- 5 Poor Pedestrian Lighting (sidewalks, bridges, intersections)
- 6 Shade

WHAT WOULD YOU LIKE TO SEE CHANGED?



- 1 More Lighting for Pedestrians
- 2 More Enforcement (e.g. traffic laws, vandalism, crime, maintenance issues)
- 3 Repair Sidewalks (cracks, ramps, pavement)
- 4 More trees and greenery (e.g. shade, aesthetics, street buffer)
- 5 More sidewalks (complete gaps, to destinations)
- 6 Clean-up (trash, broken glass, vacant lots, overgrown vegetation)

TOP 6 ANSWERS

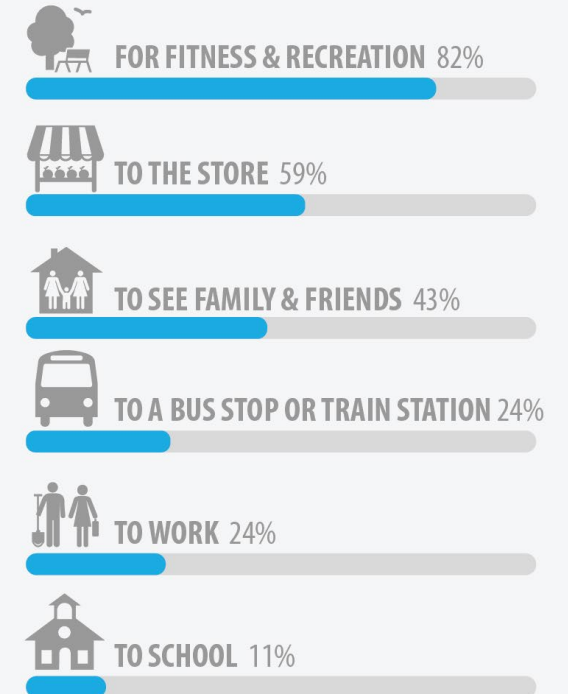
People Walking... running, in a wheelchair, pushing stroller, etc.



RATE YOUR SATISFACTION WITH WALKING IN DAYTON RIGHT NOW



I AM INTERESTED IN WALKING...



IS ANYTHING **PREVENTING** YOU FROM BIKING TO THOSE DESTINATIONS RIGHT NOW?



- 1 Lack of Safe Bikeways (separated from cars, family friendly)
- 2 Dangerous Roadways (speeding, distracted driving, cars in bike lane)
- 3 Safety/Comfort Riding in Dayton (personal safety, traffic, bike facilities)
- 4 Poor Pavement Conditions (e.g. bikeways, sidewalks, roadways)
- 5 Unsafe Road Crossings
- 6 Lack of Bike Parking

WHAT WOULD YOU LIKE TO SEE **CHANGED**?



- 1 Safe Bikeways Separated from Roadway
- 2 More Bike Lanes
- 3 Better Maintenance (repair pavement, street sweeping, flooding issues)
- 4 More Enforcement (reckless motorists, cars in bike lane)
- 5 Improve access to trails (from neighborhoods, along river, between trails)
- 6 Slow Down Drivers / Speeding Countermeasures

TOP 6 ANSWERS

People Riding...



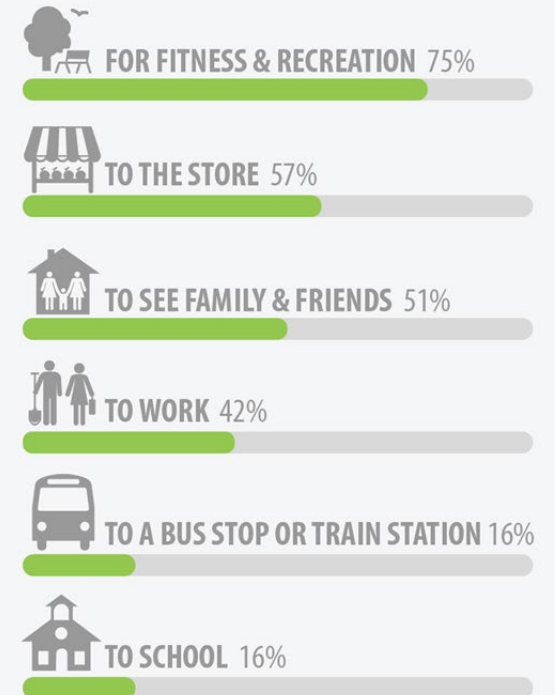
bike, scooter, skate, etc.

RATE YOUR **SATISFACTION** WITH RIDING IN DAYTON RIGHT NOW



AVG

I AM INTERESTED IN **RIDING**...





DAYTON

Active Transportation Plan



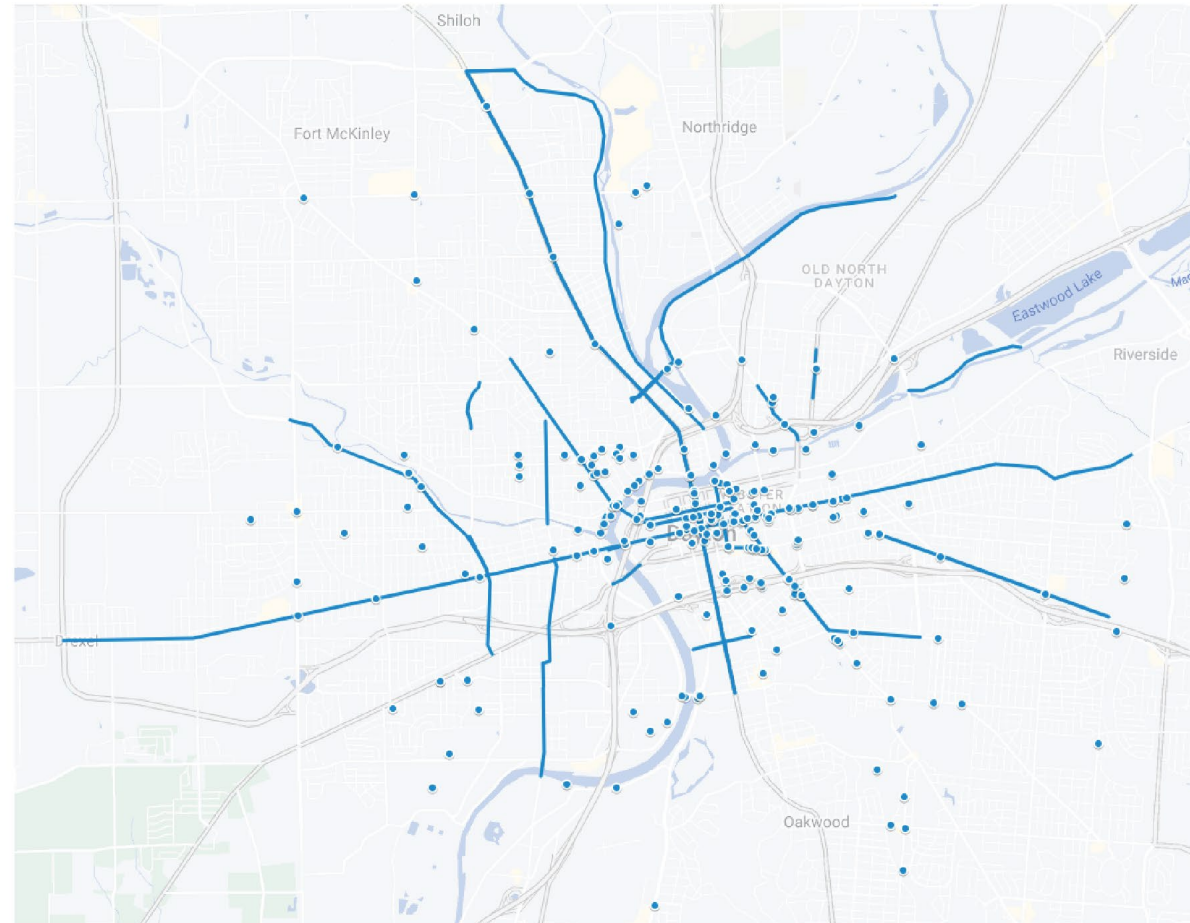
COMMUNITY ENGAGEMENT RESULTS

A Deeper Dive



Specific Places

A crowdsourcing map was used to collect over **350 comments** on specific places. Input was fairly **centralized** with more comments in **higher density areas**. The input data is very specific to individual places and should be reference as specific area and corridor plans are developed. Many of the comments **reflect the survey**, with concerns about safer walking/bicycling facilities and maintenance issues.



Crowdsourcing Map Link: https://www.google.com/maps/d/u/0/edit?mid=1MyMCEgp_luRTTHu1n3vju9nwdOIPbnc&usp=sharing

RETIRED



Poor Physical Health is a top issue preventing people from walking

UNDER THE AGE OF 16



Higher % of respondents that:
Have a bike **69% vs 58%**

USE A MOBILITY AID



Higher % of respondents that:
Ride the bus or train 49% vs 19%



Lower % of respondents that:
Have a car 47% vs 82%
Have a bike 32% vs 58%
Drive a car 45% vs 83%
Ride a bike 14% vs 40%



Poor Physical Health is a top issue preventing people from walking

ENGLISH IS A 2ND LANGUAGE



Higher % of respondents that:
Ride the bus or train 31% vs 19%



Lower % of respondents that:
Have a car 67% vs 82%
Have a bike 33% vs 58%
Drive a car 69% vs 83%
Ride a bike 28% vs 40%
Walk 40% vs 60%



Higher rate of satisfaction with
riding a bicycle

AFRICAN AMERICAN OR BLACK



Lower % of respondents that:

Have a car 75% vs 82%

Have a bike 40% vs 58%

Ride a bike 16% vs 40%

Walk 48% vs 65%



Traffic and missing sidewalks are top issues preventing people from walking

WEST DAYTON (ZIP CODE 45417)

This area has a large African American population and has fewer bicycle and pedestrian facilities



Lower % of respondents that:

Have a car 72% vs 82%

Have a bike 33% vs 58%

Ride a bike 14% vs 40%

Walk 44% vs 66%



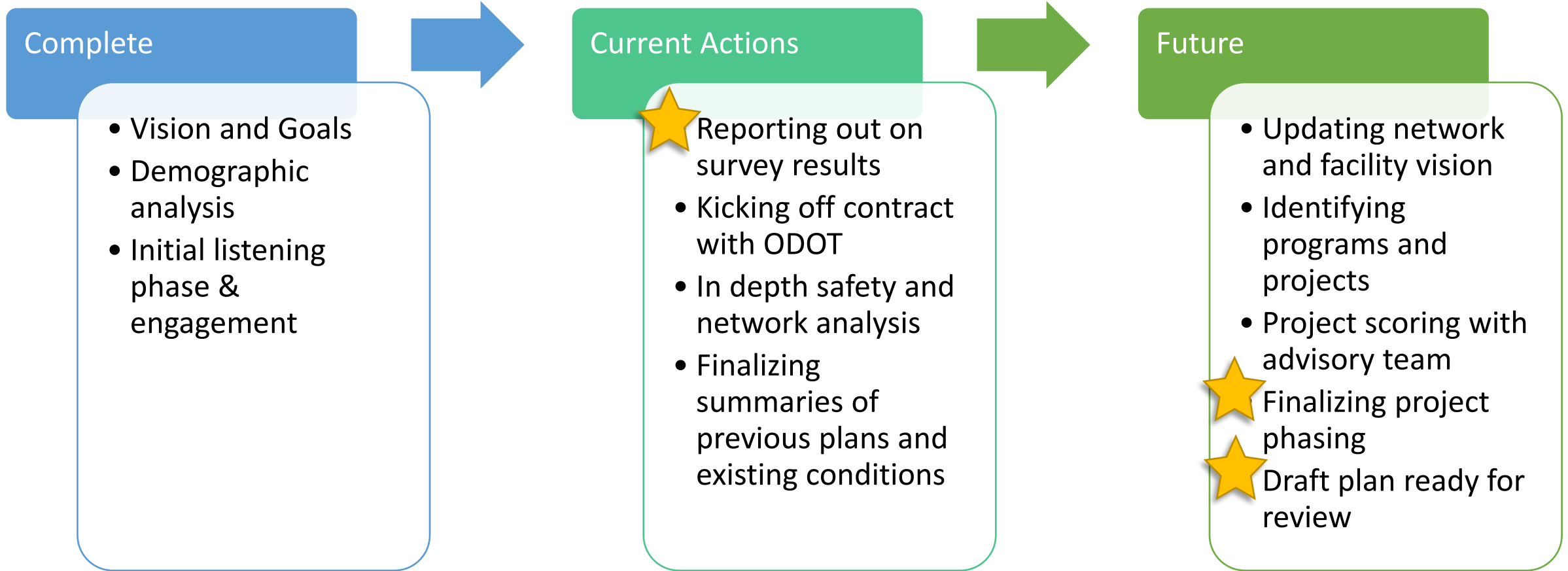
Lower rate of satisfaction with walking



Poor Physical Health is a top issue preventing people from walking



Process



★ Upcoming opportunities for community engagement

Next Steps



Stay involved!

- **Sign up** – Visit our project website and share your email address for project updates (or sign up today)
- **Share** – Share information about our survey results on social media or in a neighborhood newsletter
- **Join us** – Watch for notices on upcoming engagement events and come out to see us.



Question?

Susan Vincent

susan.vincent@daytonohio.gov

937.333.3683

WalkBike.info/Dayton

