

# Educating Our Future Through Neighborhood and Community Partnerships

October 1, 2022



Wyetta Hayden, Chief of Elementary Schools  
Rachael Murdock, Chief Academic Officer

**DAYTON**  
PUBLIC SCHOOLS

# Dayton Public Schools



∞ 15 Elementary Schools

∞ 1 Preschool Building

∞ 3 Stand alone middle schools

∞ Edwin Joel Brown

∞ Wogaman

∞ Wright Brothers

∞ 2 - 7-12 buildings (Stivers School for the Arts, Belmont)

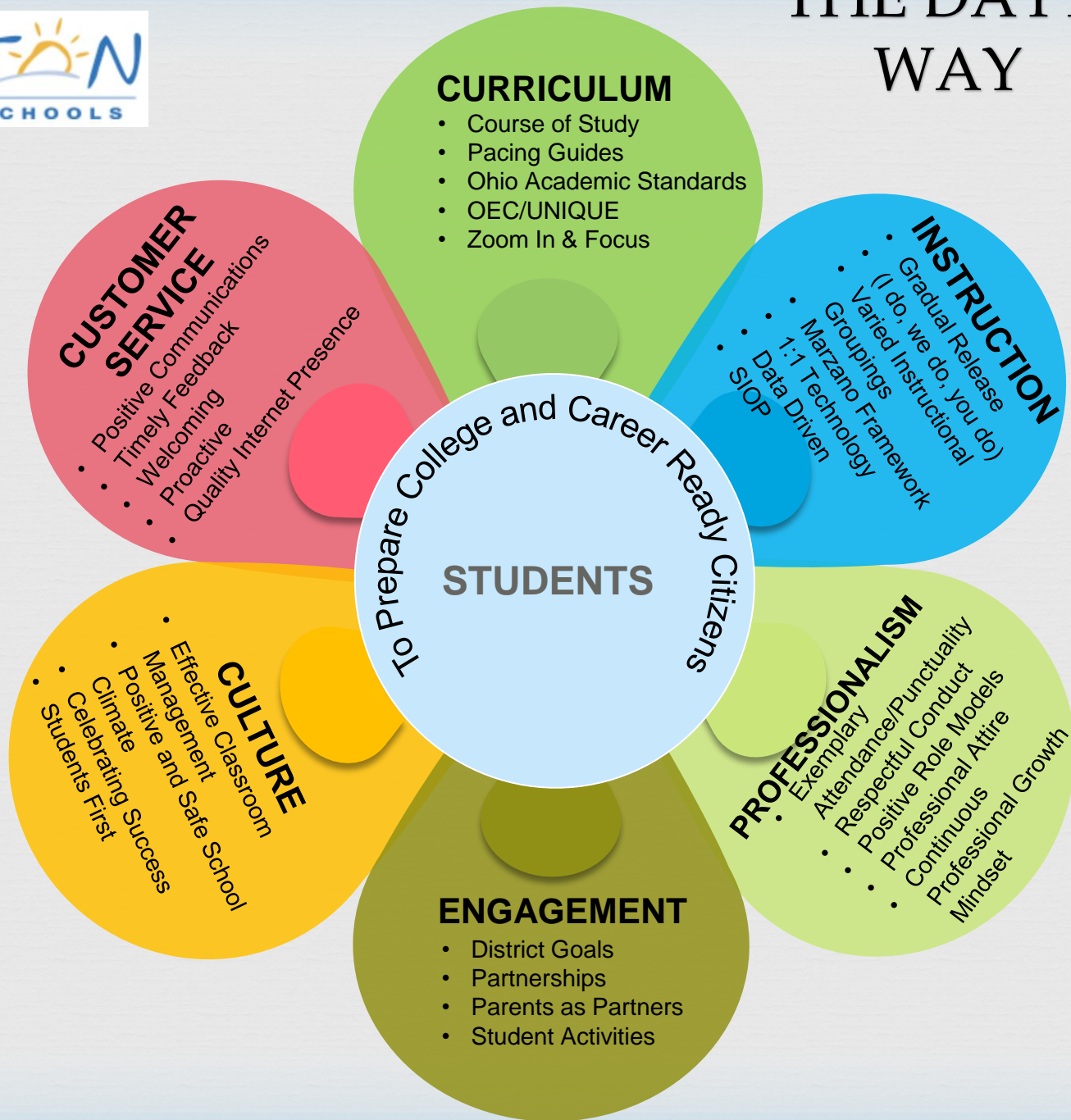
∞ 2 - 9-12 high schools (Thurgood Marshall, Paul Laurence Dunbar)

# DPS



- ❧ 2 – Career Technical Centers
  - ❧ Ponitz and Meadowdale
    - ❧ 26 CTE pathways
    - ❧ Graduation Rate - 92.4% for 4 year rate
- ❧ One Drop Out Prevention High School – Mound Street
- ❧ One PK-12 International School at Residence Park
- ❧ DPS has 2400 employees
- ❧ 11, 800+ students

# THE DAYTON WAY



# Acceleration/Gap Closing



- ❧ Early Primary Supports
  - ❧ Double Teachers Grades 1 - 3
  - ❧ Math Workshop Grades 1-3
  - ❧ Literacy and Math
  
- ❧ Extra Intervention Support in Grades 4-6
  
- ❧ Increased Literacy across content areas- Literacy cohort with 7-12 teachers and Miami University
  
- ❧ Credit recovery programming enhanced

# Additional Supports

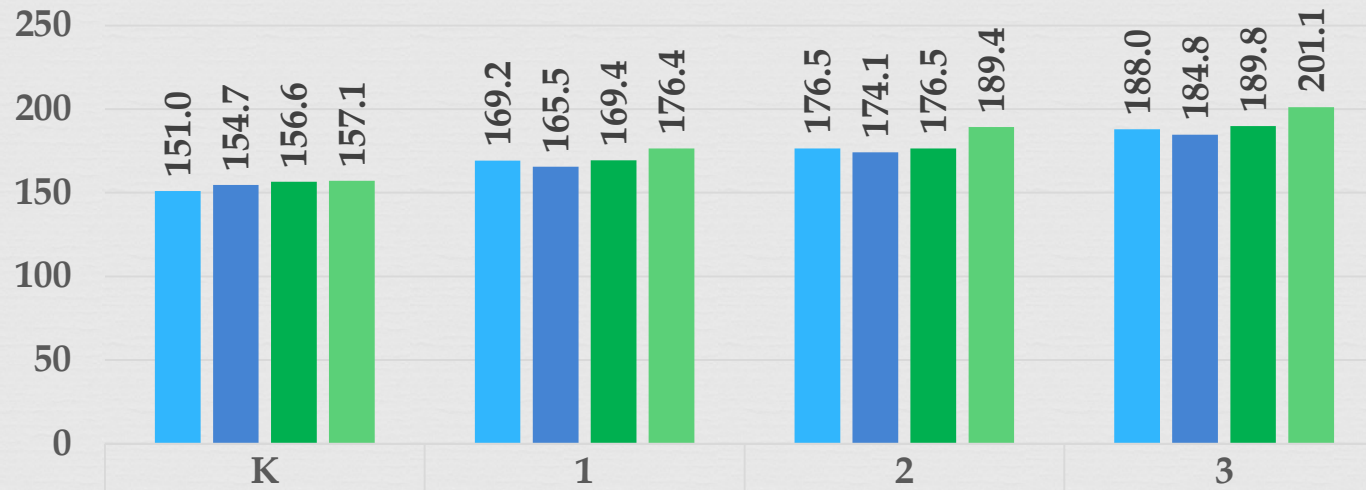


- ❧ Office of Cultural Engagement
  - ❧ New Females of Color Program
  - ❧ Males of Color Program
  
- ❧ Positive School Climate Coaches
  
- ❧ Truancy Officers and School Resource Officers
  
- ❧ Teacher Leaders (PK-8) and High School Curriculum Leads (7-12)
  
- ❧ Partnership with Dayton Children's Hospital
  - ❧ Student Resiliency Coordinators
  - ❧ Student Behavior Therapists
  
- ❧ Outreach, Student Activities Coordinator

# Three Year Trend-Math



3-Year Trend District NWEA MAP Math Average RIT

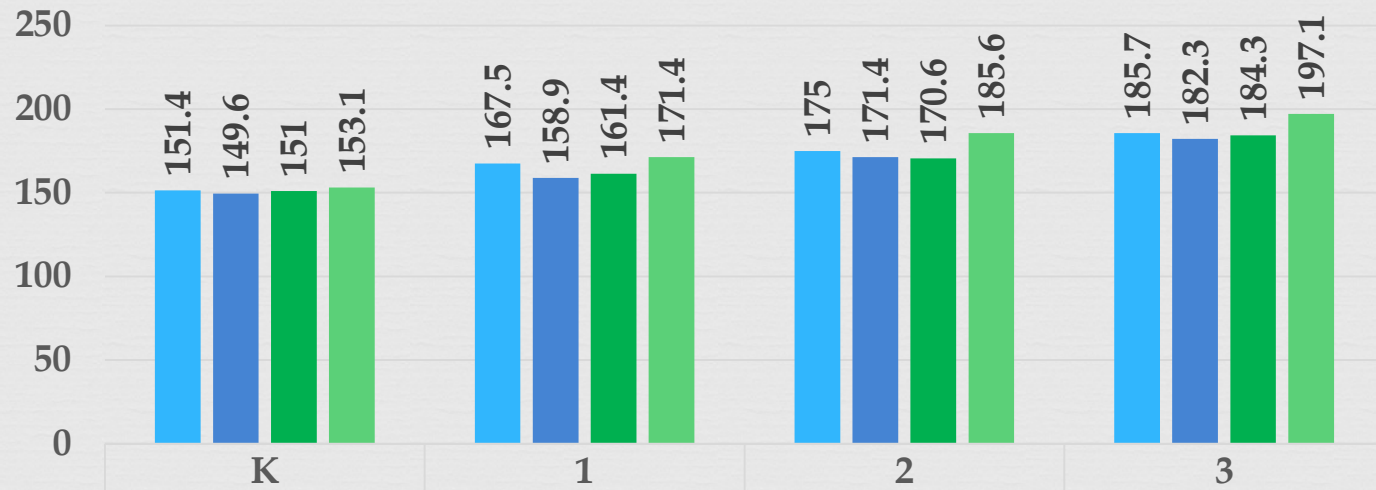


■ Spring 19	151.0	169.2	176.5	188.0
■ Spring 21	154.7	165.5	174.1	184.8
■ Spring 22	156.6	169.4	176.5	189.8
■ Spring Norm	157.1	176.4	189.4	201.1

# Three Year Trend - Reading



3-Year Trend District NWEA MAP Reading Average RIT



■ Spring 19	151.4	167.5	175	185.7
■ Spring 21	149.6	158.9	171.4	182.3
■ Spring 22	151	161.4	170.6	184.3
■ Spring Norm	153.1	171.4	185.6	197.1



# Future is Bright



- ❧ Continue to increase Career Pathways to respond to Workforce Development Needs
- ❧ Partnerships with major employers for careers/jobs for students
- ❧ Business Advisory Committee supports the workforce development
- ❧ Increasing numbers of students in College Credit Plus
- ❧ Restarting the STEM work that was stalled by COVID

# New Supports



- ❧ Continue to examine and try to close the gaps
  - ❧ Implemented new MEGASKILLS program in elementary – Skills that include responsibility, initiative, effort, perseverance, confidence, problem-solving, caring, etc.
  - ❧ Math Workshop Grades 4-6
  - ❧ Lean Six Sigma Leadership Training for students
  - ❧ Continuing resiliency building
  - ❧ UD Tutors

# Neighborhood Partnerships



## ❧ Neighborhood School Centers & External Partners

- ❧ YMCA at Cleveland Elementary
- ❧ YMCA at Edison Elementary
- ❧ OMEGA CDC at Fairview Elementary
- ❧ Children's Hospital at Kiser Elementary
- ❧ Grace UMC at Louise Troy
- ❧ McKinley Methodist at Roosevelt
- ❧ Communities in Schools at Westwood Elementary
- ❧ City Connects at Belle Haven Elementary
- ❧ East End Community Center at Ruskin Elementary
- ❧ East End Community Center at Wright Brothers MS
- ❧ Scholars of Hope at Edwin Joel Brown MS

# Opportunity for the Greater Community



- Updated all the athletic fields around each school
- Continue to upgrade the facilities with new HVAC systems, BAS systems, etc.
- Welcome Stadium Project – Not only will Students benefit but the greater community will benefit as well
- Five Rivers Health Center at Roosevelt

# Questions?

