



Ohio Environmental Protection Agency

What is the Orphan Drum Program?

Division of Emergency and
Remedial Response



Ohio Environmental Protection Agency

Groveport Field Office
4675 Homer-Ohio Lane
Columbus, Ohio 43125

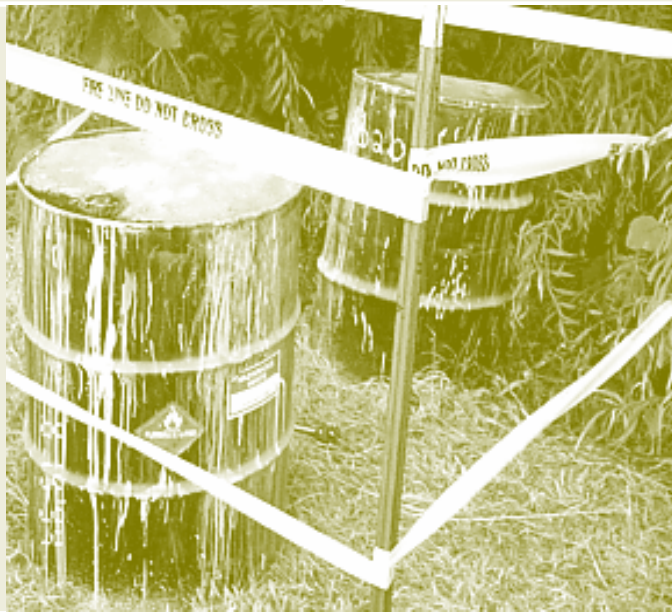
Orphan Drum Program

The Orphan Drum Program is Committed to:

- ◆ Properly disposing of small quantities of abandoned waste
- ◆ Locating the responsible parties and making them pay

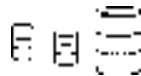
What is an Orphan Drum?

- ◆ Small quantity of any size or shape container
- ◆ Abandoned at location other than generation point
- ◆ No identifiable owner



What is not an Orphan Drum?

- ◆ Large quantity of containers
- ◆ Located at generation point
- ◆ Identifiable owner
- ◆ Property transfers/purchases



If you witness a dumping:

Try to obtain the following:

- 📄 license plate number
- 👁️ description of vehicle
- 👁️ description of dumpers
- 🕒 time and place



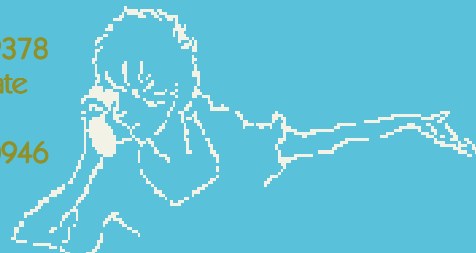
Division of Emergency and
Remedial Response

If You Locate Orphan Drums:

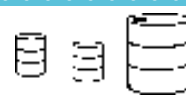
Call Ohio EPA's Emergency Response Hotline 24
hours a day, 7 days a week

1-800-282-9378
within the State

1-614-224-0946
outside the
State



Call local fire department if the containers are
leaking or are in a creek, river or lake, then call the
Ohio EPA Hotline



- ✓ Kick
- ✓ Move
- ✓ Open
- ✓ Touch
- ✓ Remove

Because:

- ✓ drums may be under pressure
- ✓ contents may be shock sensitive,
reactive or toxic
- ✓ this is a crime scene and dumping is
illegal

What Happens to Orphan Drums?

◆ Drums are sampled

The drums are sampled and secured prior to pickup. The Orphan Drum Program relies heavily on local agencies such as fire departments and trustees to protect local citizens by securing the drums pending their removal.

◆ Contents are analyzed.

◆ Waste is characterized as hazardous or non hazardous.

Nonhazardous waste disposal is the responsibility of local officials. Ohio EPA will assist in the proper disposal of these containers.

◆ Ohio EPA picks up hazardous waste containers from secure locations 2-4 times per year.

◆ Waste is disposed using Ohio companies.

Waste is handled in this order:

- ◆ reuse
- ◆ recycle
- ◆ use as a fuel
- ◆ treat
- ◆ incinerate

◆ Case is investigated to determine who is responsible

◆ Enforcement action is taken to prosecute dumpers

Ohio EPA's Emergency Response Hotline



1-800-282-9378

(in Ohio)

1-614-224-0946

(outside Ohio)

Jodi K. Billman
Orphan Drum Coordinator

Ohio Environmental Protection Agency
Groveport Field Office
4675 Homer-Ohio Lane
Columbus, Ohio 43125

Tele:
1-614-836-8761

E-mail
jodi.billman@epa.state.oh.us