

Storm Water Training 2017

Current run (last updated May 2, 2018 8:33am)

10

Polls

16

Participants

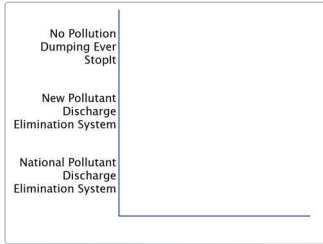
12

Average responses



Average engagement

What does NPDES stand for?



| Response options | Count | Percentage |
|---|-------|------------|
| No Pollution Dumping Ever Stoplt | 0 | 0% |
| New Pollutant Discharge Elimination System | 0 | 0% |
| National Pollutant Discharge Elimination System | 0 | 0% |

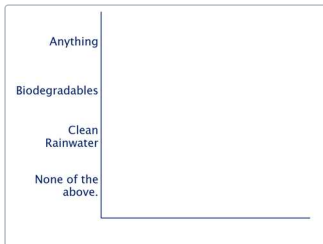


Engagement

0

Responses

What is allowed to drain to the storm sewer system?



| Response options | Count | Percentage |
|--------------------|-------|------------|
| Anything | 0 | 0% |
| Biodegradables | 0 | 0% |
| Clean Rainwater | 0 | 0% |
| None of the above. | 0 | 0% |

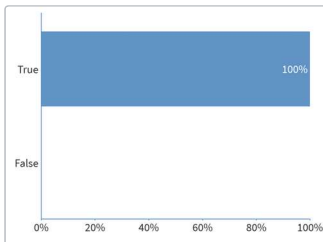


Engagement

0

Responses

Public Involvement, Pollution Prevention and Monitoring are all requirements of Dayton's NPDES permit.



| Response options | Count | Percentage |
|------------------|-------|------------|
| True | 15 | 100% |
| False | 0 | 0% |

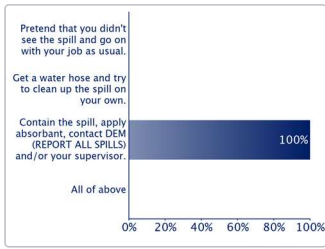


Engagement

15

Responses

If a spill occurs at Monument Fuel Station the appropriate action would be:



| Response options | Count | Percentage |
|---|-------|------------|
| Pretend that you didn't see the spill and go on with your job as usual. | 0 | 0% |
| Get a water hose and try to clean up the spill on your own. | 0 | 0% |
| Contain the spill, apply absorbant, contact DEM (REPORT ALL SPILLS) and/or your supervisor. | 16 | 100% |
| All of above | 0 | 0% |

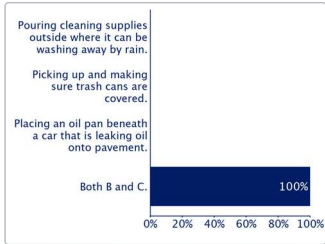


Engagement

16

Responses

An example of a Storm Water Best Management Practice would be:



| Response options | Count | Percentage |
|---|-------|------------|
| Pouring cleaning supplies outside where it can be washing away by rain. | 0 | 0% |
| Picking up and making sure trash cans are covered. | 0 | 0% |
| Placing an oil pan beneath a car that is leaking oil onto pavement. | 0 | 0% |
| Both B and C. | 15 | 100% |



Engagement

15

Responses

If you detect an illicit discharge, what should you do?



- Responses
- Take pictures, get the address and notify my supervisor with all the information.
 - Call dem Call 3333725
 - Call DEM. Identify the location and describe the discharge in detail
 - Call DEM. 333-3725. Call dem Call 3333725 Call DEM. Call it in.
 - Contain, absorb, call DEM Contact environmental Call DEM
 - Contact environmental management Call 3725 Call Katie

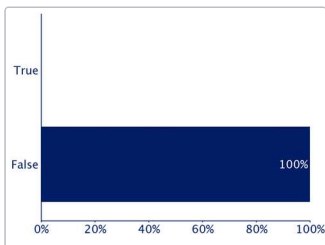


Engagement

15

Responses

Once a drum is emptied, it is OK to leave it open outside?



| Response options | Count | Percentage |
|------------------|-------|------------|
| True | 0 | 0% |
| False | 13 | 100% |

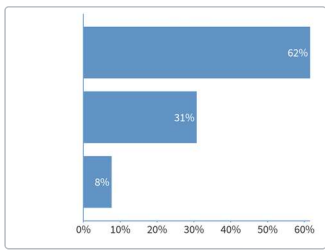


Engagement

13

Responses

What are possible sources of illicit discharges?



Response options



Count Percentage

8 62%



4 31%



1 8%

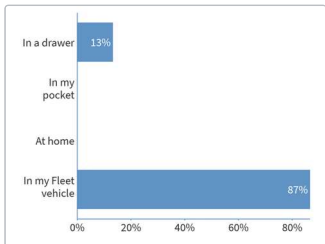


Engagement

13

Responses

Where is the Report All Spills card required to be kept by permit?



Response options

In a drawer

In my pocket

At home

In my Fleet vehicle

Count Percentage

2 13%

0 0%

0 0%

13 87%

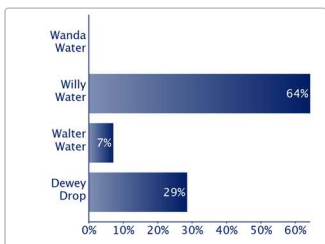


Engagement

15

Responses

Who is the City of Dayton Department of Water mascot?



Response options

Wanda Water

Willy Water

Walter Water

Response options

Dewey Drop

Count Percentage

0 0%

9 64%

1 7%

4 Percentage 29%



Engagement

14

Responses